

KEY INVESTOR INFORMATION

This document provides key investor information concerning this fund. It is not marketing material. The information provided is prescribed by law and intended to provide you with more insight into the nature and risks of investments in this fund. We advise that you read this information so that you can take an informed decision as to whether you wish to invest in this fund.

Think Total Market UCITS ETF Neutraal

Exchange Traded Fund (ETF)

ISIN: NL0009272772

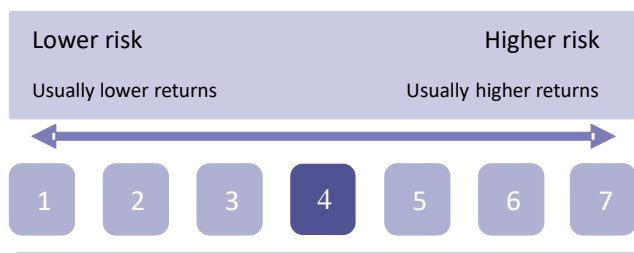
TICKER: NTM

Manager: Think ETF Asset Management B.V.

Objectives and investment policy

- The Think Total Market UCITS ETF Neutraal is a multi-asset exchange traded fund (ETF) which seeks to follow the Think Total Market Index Neutraal as closely as possible. This is a composite index made up of the indices below, in the ratios stated:
 - 40% Solactive Global Equity Index
 - 10% GPR Global 100 Index
 - 25% Markit iBoxx EUR Liquid Corporates Index
 - 25% Markit iBoxx EUR Liquid Sovereign Diversified 1-10 Index
- Exposure to these indices is obtained through direct investments in shares and bonds. The indices will be followed as closely as possible using a sampling process. Because not all shares and bonds are included in the index, the return of the ETF can deviate from that of the index followed. For the current composition, see www.thinketfs.nl or www.vaneck.com.
- Approximately 400 positions are held in total.
- Income from the fund's investments is paid out as dividend. There is the possibility of dividend 4 times per year, but the height of the dividend to be paid out is also considered. It may be the case that the income from the dividend and coupon is relatively low in a particular quarter, which means that from a cost perspective, it makes more sense to keep the income in the fund until the next payment opportunity.
- The base currency of the fund is the euro.
- Recommendation: this fund may not be suitable for a short-term investment.
- The shares of the fund are listed and traded on Euronext Amsterdam and Brussels. In normal circumstances, only officially recognised market participants (e.g. a select number of financial institutions) can buy and sell shares directly from and to the fund. Other investors can buy or sell shares daily via an intermediary on the market on which the shares are traded.

Risk and return profile



- This indicator is based on historical data and may not be a reliable indication of the fund's risk profile.
- The risk category shown is not guaranteed and can change over time.
- The lowest category does not mean that there is no risk involved.
- The fund belongs to category 4 based on the type of investments which imply the risks listed below. Either individually or in combination these can affect the value of the investments or result in losses.
 - The investment risk is concentrated on certain markets, sectors or currencies. This means that the fund is sensitive to local economic, market-related, political or regulatory events.
- The value of shares and share-related securities can be influenced by daily fluctuations on the share markets. The other factors that can have an influence include politics and economic news, company results and important events at companies.
- 'Credit risk' and/or changes in the interest rates have a significant influence on the results of fixed-income securities issued by companies. Potential or actual downgrades in the credit rating can increase the assumed risk level.
- Investments in property securities can be affected by the general performance of share markets and the property sector. Changes in the interest rates in particular can have an impact on the value of the property in which a property company invests.
- Other specific risks:
 - Credit risk: the issuer of the security held by the fund may be unable to pay interest that has fallen due or repay capital.
 - Liquidity risk: lower liquidity means there are not enough buyers or sellers to allow the fund to easily trade the investments.

You can find more information on the risks in the risk section of the fund's prospectus. This is available at www.thinketfs.nl or www.vaneck.com.

Costs

One-off charges that are taken before or after you invest	
Entry charge	None*
Exit charge	None*
These are the maximum charges that could be taken from your money before it is invested or before we pay out the sale proceeds of your investment.	
Charges taken from the fund in the course of one year. These charges are related to the management of the sub-fund, including marketing and distribution. These charges reduce the potential growth of your investment.	
Ongoing charges	0.30%
Charges taken from the fund under certain specific conditions.	
Performance fee	None

Investors who buy or sell shares via the market pay the costs charged by their bank or broker. You can obtain information about these costs from your bank or broker. The charges paid by investors limit the potential growth in assets.

* Not applicable to investors on the secondary market. Investors who buy or sell shares via a market pay the costs charged by their bank. Information on these charges can be obtained from the markets where the shares are listed and traded or from the banks.

You can find more information on the charges in the costs section of the fund's prospectus. This is available at www.thinketfs.nl or www.vaneck.com.

Past performance

Past results are no indication of future performance.

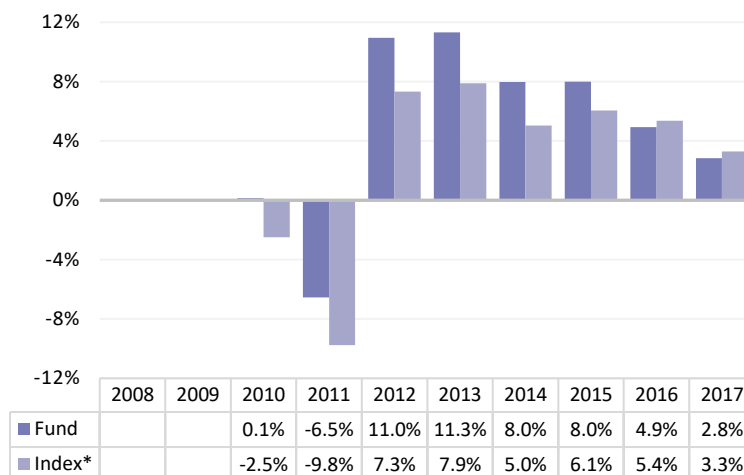
The graph shows the fund's annual performance. This is expressed as a percentage change in the fund's intrinsic value as of the end of each year. The fund was introduced on 14 December 2009. The base currency of the fund is EUR.

The return is shown after deduction of the ongoing charges. Any entry or exit charges have not been included in the calculation. The results between 15 December 2017 and 21 May 2018 were achieved under circumstances which no longer apply.

The fund uses a gross reinvestment index. The performance includes income distributions gross of Dutch withholding tax because Dutch investors can reclaim the 15% Dutch withholding tax levied. Different investor types and investors from other jurisdictions may not be able to achieve the same level of performance due to their tax status and local tax rules.

* Since no TMT Neutraal total return index was available, the performance up to September 2015 is compared to the price index. This may present a distorted picture since the effect of dividend and coupon payments is not included in the price index.

Performance achieved up to 31 December 2017



Practical information

- The custodian of the fund is Kas Bank N.V.
- For more information on the Fund, see the prospectus and most recent annual reports and semi-annual reports. You can find these documents and other practical information, such as the intrinsic values, at www.thinketfs.nl or www.vaneck.com.
- The fund is a sub-fund of ThinkCapital ETF's N.V., an umbrella structure that encompasses various sub-funds. This document applies specifically for the fund stated at the beginning of this document. The prospectus and the annual and semi-annual reports, however, are prepared for the umbrella structure and are available in Dutch.
- ThinkCapital ETF's N.V. is an umbrella fund with segregated liabilities between its sub-funds. Based on the Dutch Financial Supervision Act, the assets of the sub-funds are segregated from the assets of the other sub-funds.
- Think ETF Asset Management B.V. can only be held liable on grounds of a statement contained in this document that is misleading, inaccurate or inconsistent with the relevant parts of the prospectus for the fund.
- For the remuneration policy of Think ETF Asset Management B.V., see the website.
- Investors should take into account that the fund is subject to Dutch tax legislation and that this could have implications for their investment.
- Please contact your tax advisor before making an investment.
- ETF shares of one sub-fund cannot be exchanged for ETF shares of another sub-fund.

A licence has been granted in the Netherlands to this fund and the manager and they are under the supervision of the Netherlands Authority for the Financial Markets (AFM). Please consult the Prospectus for the full disclaimer.

This document containing key investor information is accurate on the date of 25 September 2018.