



Booklet 5C

# Condensed Interim Financial Report

31 December 2023

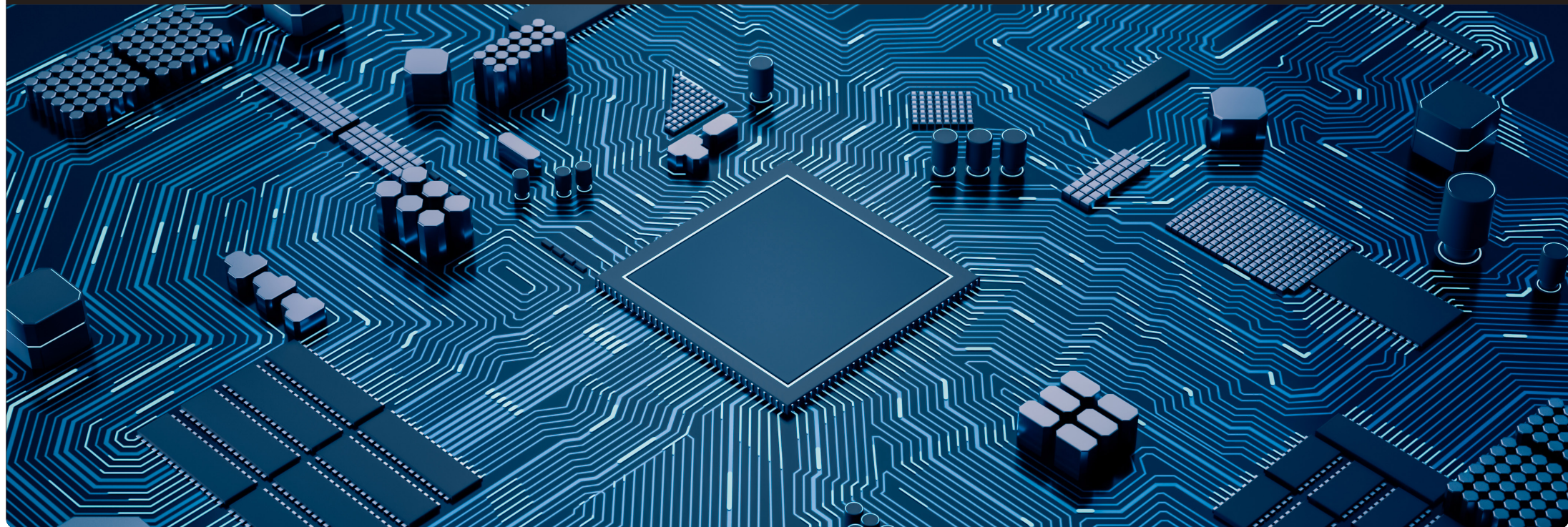
**Responsible Entity**

Betashares Capital Ltd

(ABN 78 139 566 868)

Level 11, 50 Margaret,  
Sydney, NSW 2000

[betashares.com.au](http://betashares.com.au)



**Booklet 5C**

**Betashares Asia Technology Tigers ETF - ASX Code: ASIA** (ARSN 626 788 967)

**Betashares Cloud Computing ETF - ASX Code : CLDD** (ARSN 643 693 636)

**Betashares Energy Transition Metals ETF - ASX Code : XMET** (ARSN 657 340 371)

**Betashares Global Cybersecurity ETF - ASX Code: HACK** (ARSN 169 914 434)

**Betashares Global Robotics and Artificial Intelligence ETF - ASX Code: RBTZ** (ARSN 624 898 157)

**Betashares Global Royalties ETF - ASX Code: ROYL** (ARSN 657 340 166)

**Betashares Metaverse ETF - ASX Code: MTAV** (ARSN 656 267 319)

**Betashares NASDAQ 100 ETF - ASX Code: NDQ** (ARSN 169 907 564)

**Betashares S&P/ASX Australian Technology ETF - ASX Code: ATEC** (ARSN 635 315 329)

**Condensed Interim Financial Report**

**for the half-year ended 31 December 2023**

**Booklet 5C**  
**Condensed Interim Financial Report**  
**for the half-year ended 31 December 2023**

| <b>Contents</b>                                      | <b>Page</b> |
|--|-------------|
| Directors' report                                    | 2           |
| Auditor's independence declaration                   | 5           |
| Condensed interim statements of comprehensive income | 6           |
| Condensed interim statements of financial position   | 9           |
| Condensed interim statements of changes in equity    | 12          |
| Condensed interim statements of cash flows           | 15          |
| Notes to the condensed interim financial statements  | 18          |
| Directors' declaration                               | 33          |
| Independent auditor's report to the unitholders      | 34          |

## Directors' report

The directors of Betashares Capital Ltd, the Responsible Entity of the following managed investment funds (the "Funds") present their report together with the condensed interim financial report of the Funds for the half-year ended 31 December 2023 and the auditor's report thereon.

| <b>Fund name</b>   | <b>Referred to in this document as</b>          | <b>Financial reporting period</b> | <b>ARSN</b> |
|--|---|-----------------------------------|-------------|
| Betashares Asia Technology Tigers ETF                      | Asia Technology Tigers ETF                      | 1 July 2023 to 31 December 2023   | 626 788 967 |
| Betashares Cloud Computing ETF                             | Cloud Computing ETF                             | 1 July 2023 to 31 December 2023   | 643 693 636 |
| Betashares Energy Transition Metals ETF                    | Energy Transition Metals ETF                    | 1 July 2023 to 31 December 2023   | 657 340 371 |
| Betashares Global Cybersecurity ETF                        | Global Cybersecurity ETF                        | 1 July 2023 to 31 December 2023   | 169 914 434 |
| Betashares Global Robotics and Artificial Intelligence ETF | Global Robotics and Artificial Intelligence ETF | 1 July 2023 to 31 December 2023   | 624 898 157 |
| Betashares Global Royalties ETF                            | Global Royalties ETF                            | 1 July 2023 to 31 December 2023   | 657 340 166 |
| Betashares Metaverse ETF                                   | Metaverse ETF                                   | 1 July 2023 to 31 December 2023   | 656 267 319 |
| Betashares NASDAQ 100 ETF                                  | NASDAQ 100 ETF                                  | 1 July 2023 to 31 December 2023   | 169 907 564 |
| Betashares S&P/ASX Australian Technology ETF               | S&P/ASX Australian Technology ETF               | 1 July 2023 to 31 December 2023   | 635 315 329 |

### Responsible Entity

The Responsible Entity of the Funds is Betashares Capital Ltd (ABN 78 139 566 868). The Responsible Entity's registered office and principal place of business is Level 11, 50 Margaret Street, Sydney, NSW 2000.

### Principal activities

The principal activity of each Fund is to invest in accordance with the investment objective and guidelines as set out in the Fund's current Product Disclosure Statement and its Constitution.

The Funds did not have any employees during the half-year.

There were no significant changes in the nature of the Funds' activities during the financial half-year.

### Directors

The following persons held office as directors of Betashares Capital Ltd during the year or since the end of the year up to the date of this report:

Mr Alex Vynokur (appointed 21 September 2009)  
 Mr Jason Gellert (appointed 5 March 2021)  
 Mr Edward Sippel (appointed 5 March 2021)

## **Directors' report (continued)**

### **Review and results of operations**

During the half-year, the Funds continued to invest in accordance with target asset allocations as set out in their governing documents and in accordance with the provisions of the Funds' Constitutions.

The results of operations of the Funds are disclosed in the condensed interim statements of comprehensive income. The income distributions payable by each of the Funds are disclosed in the condensed interim statements of financial position. The income distributions paid and payable by each of the Funds are disclosed in Note 4 to the condensed interim financial statements.

### **Significant changes in state of affairs**

In the opinion of the directors, there were no significant changes in the state of affairs of the Funds that occurred during the financial half-year.

### **Matters subsequent to the end of the financial half-year**

Since the end of the reporting period the net asset value of the below Funds has changed by more than 10% due to changes in the fair value of the investments held. These movements result from implementation of the investment strategy as set out in the relevant Funds' Product Disclosure Statement.

| <b>Fund</b>                                     | <b>Net asset value changed by:</b> |
|---|------------------------------------|
| Global Cybersecurity ETF                        | 12.41%                             |
| Global Robotics and Artificial Intelligence ETF | 15.65%                             |
| Metaverse ETF                                   | 13.16%                             |
| NASDAQ 100 ETF                                  | 13.67%                             |
| S&P/ASX Australian Technology ETF               | 14.71%                             |

No matter or circumstance has arisen since 31 December 2023 that has significantly affected, or may significantly affect:

- (i) the operations of the Funds in future financial periods; or
- (ii) the results of those operations in future financial periods; or
- (iii) the state of affairs of the Funds in future financial periods.

**Directors' report (continued)**

**Likely developments and expected results of operations**

The results of the Funds' operations will be affected by a number of factors, including the performance of investment markets in which the Funds invest. Investment performance is not guaranteed and future returns may differ from past returns. As investment conditions change over time, past returns should not be used to predict future returns.

Further information on likely developments in the operation of the Funds and the expected results of those operations have not been included in this report because the Responsible Entity believes it would be likely to result in unreasonable prejudice to the Funds.

**Rounding of amounts to the nearest thousand dollars**

The Funds are entities of the kind referred to in *ASIC Corporations (Rounding in Financial/Directors' Reports) Instrument 2016/191* and in accordance with that instrument, amounts in the condensed interim financial report and directors' report have been rounded off to the nearest thousand dollars, unless otherwise stated.

**Compensation (ASIC Regulatory Guide 94 Unit pricing: Guide to good practice)**

The Responsible Entity may apply a \$20 minimum to compensation amounts in respect of any unit pricing errors for exited investors.

**Auditor's independence declaration**

A copy of the Auditor's independence declaration as required under section 307C of the *Corporations Act 2001* is set out on page 5.

This report is made in accordance with a resolution of the directors.



Alex Vynokur  
Director

Sydney  
8 March 2024



## Lead Auditor's Independence Declaration under Section 307C of the Corporations Act 2001

To the Directors of Betashares Capital Limited, the Responsible Entity for the Schemes:

Betashares Asia Technology Tigers ETF

Betashares Global Royalties ETF

Betashares Cloud Computing ETF

Betashares Metaverse ETF

Betashares Energy Transition Metals ETF

Betashares NASDAQ 100 ETF

Betashares Global Cybersecurity ETF

Betashares S&P/ASX Australian Technology ETF

Betashares Global Robotics and Artificial Intelligence ETF

I declare that, to the best of my knowledge and belief, in relation to the review of Schemes for the half-year ended 31 December 2023 there have been:

- i. no contraventions of the auditor independence requirements as set out in the *Corporations Act 2001* in relation to the review; and
- ii. no contraventions of any applicable code of professional conduct in relation to the review.

  
KPMG



Nicholas Buchanan

*Partner*

Sydney

8 March 2024

**Booklet 5C**  
**Condensed interim statements of comprehensive income**  
**For the half-year ended 31 December 2023**

**Condensed interim statements of comprehensive income**

|  | <b>Asia Technology<br/>Tigers ETF</b>  |                               | <b>Cloud<br/>Computing ETF</b>         |                               | <b>Energy Transition<br/>Metals ETF<sup>1</sup></b> |                               |
|--|--|-------------------------------|--|-------------------------------|---|-------------------------------|
|  | <b>31 December<br/>2023<br/>\$'000</b> | 31 December<br>2022<br>\$'000 | <b>31 December<br/>2023<br/>\$'000</b> | 31 December<br>2022<br>\$'000 | <b>31 December<br/>2023<br/>\$'000</b>              | 31 December<br>2022<br>\$'000 |
| <b>Investment income</b>   |  |                               |  |                               |   |                               |
| Interest income  | 10                                     | 8                             | 2                                      | 1                             | 1   | -                             |
| Dividend/distribution income   | 3,274                                  | 3,619                         | 49                                     | 52                            | 234   | 7                             |
| Net gains/(losses) on financial instruments at fair value through profit or loss | 22,985                                 | (44,651)                      | 5,541                                  | (389)                         | (2,513)   | (806)                         |
| Net foreign exchange gains/(losses)  | (8)                                    | 142                           | 12                                     | 47                            | (7)   | (9)                           |
| Other operating income   | 68                                     | 22                            | 1                                      | 2                             | 6   | 10                            |
| <b>Total net investment income/(loss)</b>  | <b>26,329</b>                          | <b>(40,860)</b>               | <b>5,605</b>                           | <b>(287)</b>                  | <b>(2,279)</b>                                      | <b>(798)</b>                  |
| <b>Expenses</b>  |  |                               |  |                               |   |                               |
| Management fees  | 1,332                                  | 1,270                         | 145                                    | 141                           | 74  | 9                             |
| Expense recoveries   | 234                                    | 223                           | 25                                     | 25                            | -   | -                             |
| Transaction costs  | 146                                    | 110                           | 3                                      | 6                             | 14  | 8                             |
| Interest expenses  | 5                                      | -                             | -                                      | -                             | -   | -                             |
| Other operating expenses   | 196                                    | 619                           | 4                                      | 10                            | 2   | 1                             |
| <b>Total operating expenses</b>  | <b>1,913</b>                           | <b>2,222</b>                  | <b>177</b>                             | <b>182</b>                    | <b>90</b>   | <b>18</b>                     |
| <b>Profit/(loss) for the half-year</b>   | <b>24,416</b>                          | <b>(43,082)</b>               | <b>5,428</b>                           | <b>(469)</b>                  | <b>(2,369)</b>                                      | <b>(816)</b>                  |
| Other comprehensive income   | -                                      | -                             | -                                      | -                             | -   | -                             |
| <b>Total comprehensive income/(loss) for the half-year</b>                       | <b>24,416</b>                          | <b>(43,082)</b>               | <b>5,428</b>                           | <b>(469)</b>                  | <b>(2,369)</b>                                      | <b>(816)</b>                  |

The above condensed interim statements of comprehensive income should be read in conjunction with the accompanying notes.

<sup>1</sup> The comparative amount for Energy Transition Metals ETF was from 26 October 2022 to 31 December 2022.



Booklet 5C  
Condensed interim statements of comprehensive income  
For the half-year ended 31 December 2023  
(continued)

| Condensed interim statements of comprehensive income                             | Global<br>Cybersecurity ETF |                     | Global Robotics<br>and Artificial<br>Intelligence ETF |                     | Global<br>Royalties ETF <sup>2</sup> |                     |
|--|-----------------------------|---------------------|---|---------------------|--------------------------------------|---------------------|
|  | 31 December<br>2023         | 31 December<br>2022 | 31 December<br>2023                                   | 31 December<br>2022 | 31 December<br>2023                  | 31 December<br>2022 |
|  | \$'000                      | \$'000              | \$'000  | \$'000              | \$ <sup>3</sup>                      | \$ <sup>3</sup>     |
| <b>Investment income</b>   |                             |                     |   |                     |                                      |                     |
| Interest income  | 10                          | 19                  | 2   | -                   | 449                                  | 6                   |
| Dividend/distribution income   | 4,446                       | 3,422               | 402   | 429                 | 50,502                               | 23,690              |
| Net gains/(losses) on financial instruments at fair value through profit or loss | 111,560                     | (18,191)            | (5,455)   | 4,194               | 28,983                               | 256,282             |
| Net foreign exchange gains/(losses)  | (112)                       | 359                 | 50  | 163                 | (15,526)                             | 13,542              |
| Other operating income   | 10                          | 14                  | 10  | 2                   | 2,027                                | 1,171               |
| <b>Total net investment income/(loss)</b>  | <b>115,914</b>              | <b>(14,377)</b>     | <b>(4,991)</b>  | <b>4,788</b>        | <b>66,435</b>                        | <b>294,691</b>      |
| <b>Expenses</b>  |                             |                     |   |                     |                                      |                     |
| Management fees  | 2,182                       | 1,826               | 465   | 333                 | 15,798                               | 5,007               |
| Expense recoveries   | 383                         | 320                 | 99  | 71                  | -                                    | -                   |
| Transaction costs  | 145                         | 172                 | 9   | 33                  | 2,431                                | 997                 |
| Interest expenses  | 14                          | -                   | 1   | -                   | -                                    | -                   |
| Other operating expenses   | 1                           | 86                  | 2   | 44                  | 487                                  | 4,697               |
| <b>Total operating expenses</b>  | <b>2,725</b>                | <b>2,404</b>        | <b>576</b>  | <b>481</b>          | <b>18,716</b>                        | <b>10,701</b>       |
| <b>Profit/(loss) for the half-year</b>   | <b>113,189</b>              | <b>(16,781)</b>     | <b>(5,567)</b>  | <b>4,307</b>        | <b>47,719</b>                        | <b>283,990</b>      |
| Other comprehensive income   | -                           | -                   | -   | -                   | -                                    | -                   |
| <b>Total comprehensive income/(loss) for the half-year</b>                       | <b>113,189</b>              | <b>(16,781)</b>     | <b>(5,567)</b>  | <b>4,307</b>        | <b>47,719</b>                        | <b>283,990</b>      |

The above condensed interim statements of comprehensive income should be read in conjunction with the accompanying notes.

<sup>2</sup> The comparative amount for Global Royalties ETF was from 9 September 2022 to 31 December 2022.

<sup>3</sup> Rounded to the nearest whole dollar as the Fund does not meet the criteria set out in ASIC Instrument 2016/191 to round to the nearest thousand dollars.

Booklet 5C  
Condensed interim statements of comprehensive income  
For the half-year ended 31 December 2023  
(continued)

Condensed interim statements of comprehensive income

|  | Metaverse<br>ETF <sup>4</sup>          |  | NASDAQ<br>100 ETF             |                               | S&P/ASX Australian<br>Technology ETF |                               |
|--|--|--|-------------------------------|-------------------------------|--------------------------------------|-------------------------------|
|  | 31 December<br>2023<br>\$ <sup>3</sup> | 31 December<br>2022<br>\$ <sup>3</sup> | 31 December<br>2023<br>\$'000 | 31 December<br>2022<br>\$'000 | 31 December<br>2023<br>\$'000        | 31 December<br>2022<br>\$'000 |
| <b>Investment income</b>   |  |  |                               |                               |                                      |                               |
| Interest income  | 101                                    | -                                      | 137                           | 55                            | 2                                    | 2                             |
| Dividend/distribution income   | 6,988                                  | 5,373                                  | 14,811                        | 9,680                         | 1,192                                | 979                           |
| Net gains/(losses) on financial instruments at fair value through profit or loss | 276,498                                | (352,998)                              | 274,251                       | (98,178)                      | 21,296                               | 6,713                         |
| Net foreign exchange gains/(losses)  | (6,509)                                | (9,500)                                | (1,031)                       | (499)                         | -                                    | -                             |
| Other operating income   | 743                                    | 1,481                                  | 65                            | 56                            | -                                    | -                             |
| <b>Total net investment income/(loss)</b>  | <b>277,821</b>                         | <b>(355,644)</b>                       | <b>288,233</b>                | <b>(88,886)</b>               | <b>22,490</b>                        | <b>7,694</b>                  |
| <b>Expenses</b>  |  |  |                               |                               |                                      |                               |
| Management fees  | 8,493                                  | 5,754                                  | 6,585                         | 4,599                         | 359                                  | 284                           |
| Expense recoveries   | -                                      | -                                      | 1,733                         | 1,210                         | 95                                   | 75                            |
| Transaction costs  | 666                                    | 1,632                                  | 96                            | 72                            | 3                                    | 2                             |
| Interest expenses  | 44                                     | 16                                     | 19                            | -                             | -                                    | -                             |
| Other operating expenses   | 646                                    | 933                                    | 9                             | 4                             | 2                                    | 3                             |
| <b>Total operating expenses</b>  | <b>9,849</b>                           | <b>8,335</b>                           | <b>8,442</b>                  | <b>5,885</b>                  | <b>459</b>                           | <b>364</b>                    |
| <b>Profit/(loss) for the half-year</b>   | <b>267,972</b>                         | <b>(363,979)</b>                       | <b>279,791</b>                | <b>(94,771)</b>               | <b>22,031</b>                        | <b>7,330</b>                  |
| Other comprehensive income   | -                                      | -                                      | -                             | -                             | -                                    | -                             |
| <b>Total comprehensive income/(loss) for the half-year</b>                       | <b>267,972</b>                         | <b>(363,979)</b>                       | <b>279,791</b>                | <b>(94,771)</b>               | <b>22,031</b>                        | <b>7,330</b>                  |

The above condensed interim statements of comprehensive income should be read in conjunction with the accompanying notes.

<sup>3</sup> Rounded to the nearest whole dollar as the Fund does not meet the criteria set out in ASIC Instrument 2016/191 to round to the nearest thousand dollars.

<sup>4</sup> The comparative amount for Metaverse ETF was from 2 August 2022 to 31 December 2022.

Condensed interim statements of financial position

|   | Notes | Asia Technology<br>Tigers ETF |                 | Cloud<br>Computing ETF |                 | Energy Transition<br>Metals ETF |                 |
|---|-------|-------------------------------|-----------------|------------------------|-----------------|---------------------------------|-----------------|
|   |       | 31 December<br>2023           | 30 June<br>2023 | 31 December<br>2023    | 30 June<br>2023 | 31 December<br>2023             | 30 June<br>2023 |
|   |       | \$'000                        | \$'000          | \$'000                 | \$'000          | \$'000                          | \$'000          |
| <b>Assets</b>   |       |                               |                 |                        |                 |                                 |                 |
| Cash and cash equivalents   | 5     | 691                           | 3,046           | 30                     | 112             | 23                              | 27              |
| Financial assets at fair value through profit or loss                       | 6     | 456,186                       | 466,260         | 52,093                 | 51,370          | 22,426                          | 17,418          |
| Due from brokers - receivables for securities sold                          |       | -                             | 206             | -                      | -               | -                               | -               |
| Other receivables   |       | 1,131                         | 2,403           | 22                     | 7               | 11                              | 3               |
| <b>Total assets</b>   |       | <b>458,008</b>                | <b>471,915</b>  | <b>52,145</b>          | <b>51,489</b>   | <b>22,460</b>                   | <b>17,448</b>   |
| <b>Liabilities</b>  |       |                               |                 |                        |                 |                                 |                 |
| Distributions payable   | 4     | 2,797                         | 221             | -                      | -               | 153                             | 100             |
| Other payables  |       | 280                           | 3,265           | 32                     | 35              | 13                              | 9               |
| <b>Total liabilities (excluding net assets attributable to unitholders)</b> |       | <b>3,077</b>                  | <b>3,486</b>    | <b>32</b>              | <b>35</b>       | <b>166</b>                      | <b>109</b>      |
| <b>Net assets attributable to unitholders - equity</b>                      | 3     | <b>454,931</b>                | <b>468,429</b>  | <b>52,113</b>          | <b>51,454</b>   | <b>22,294</b>                   | <b>17,339</b>   |

The above condensed interim statements of financial position should be read in conjunction with the accompanying notes.

Booklet 5C  
Condensed interim statements of financial position  
As at 31 December 2023  
(continued)

| Condensed interim statements of financial position |   | Global<br>Cybersecurity ETF |                 | Global Robotics<br>and Artificial<br>Intelligence ETF |                 | Global<br>Royalties ETF |                  |
|--|---|-----------------------------|-----------------|---|-----------------|-------------------------|------------------|
|  |   | 31 December<br>2023         | 30 June<br>2023 | 31 December<br>2023                                   | 30 June<br>2023 | 31 December<br>2023     | 30 June<br>2023  |
| Notes  |   | \$'000                      | \$'000          | \$'000  | \$'000          | \$ <sup>1</sup>         | \$ <sup>1</sup>  |
| <b>Assets</b>                                      |   |                             |                 |   |                 |                         |                  |
|  | 5 | 1,387                       | 820             | 261   | 253             | 17,552                  | 8,122            |
|  | 6 | 833,842                     | 732,006         | 211,131   | 201,967         | 5,672,528               | 3,017,711        |
|  |   | 1,730                       | 617             | 343   | 1,632           | 431,811                 | 133,829          |
|  |   | <b>836,959</b>              | <b>733,443</b>  | <b>211,735</b>  | <b>203,852</b>  | <b>6,121,891</b>        | <b>3,159,662</b> |
| <b>Liabilities</b>                                 |   |                             |                 |   |                 |                         |                  |
|  | 4 | -                           | -               | -   | 97              | 31,617                  | 125,906          |
|  |   | -                           | -               | -   | 1,292           | -                       | -                |
|  |   | 477                         | 437             | 112   | 111             | 3,429                   | 1,964            |
|  |   | <b>477</b>                  | <b>437</b>      | <b>112</b>  | <b>1,500</b>    | <b>35,046</b>           | <b>127,870</b>   |
|  | 3 | <b>836,482</b>              | <b>733,006</b>  | <b>211,623</b>  | <b>202,352</b>  | <b>6,086,845</b>        | <b>3,031,792</b> |

The above condensed interim statements of financial position should be read in conjunction with the accompanying notes.

<sup>1</sup> Rounded to the nearest whole dollar as the Fund does not meet the criteria set out in ASIC Instrument 2016/191 to round to the nearest thousand dollars.

Booklet 5C  
Condensed interim statements of financial position  
As at 31 December 2023  
(continued)

Condensed interim statements of financial position

|   | Notes | Metaverse<br>ETF    |                  | NASDAQ<br>100 ETF   |                  | S&P/ASX Australian<br>Technology ETF |                 |
|---|-------|---------------------|------------------|---------------------|------------------|--------------------------------------|-----------------|
|   |       | 31 December<br>2023 | 30 June<br>2023  | 31 December<br>2023 | 30 June<br>2023  | 31 December<br>2023                  | 30 June<br>2023 |
|   |       | \$ <sup>1</sup>     | \$ <sup>1</sup>  | \$'000              | \$'000           | \$'000                               | \$'000          |
| <b>Assets</b>   |       |                     |                  |                     |                  |                                      |                 |
| Cash and cash equivalents   | 5     | 3,157               | 4,095            | 13,411              | 4,487            | 76                                   | 56              |
| Cash held on collateral   |       | -                   | -                | 951                 | 1,852            | -                                    | -               |
| Financial assets at fair value through profit or loss                       | 6     | 3,252,981           | 1,745,649        | 3,755,217           | 3,262,470        | 208,632                              | 185,536         |
| Due from brokers - receivables for securities sold                          |       | -                   | -                | -                   | -                | -                                    | -               |
| Other receivables   |       | 920                 | 874              | 10,846              | 675              | 17                                   | 15              |
| <b>Total assets</b>   |       | <b>3,257,058</b>    | <b>1,750,618</b> | <b>3,780,425</b>    | <b>3,269,484</b> | <b>208,725</b>                       | <b>185,607</b>  |
| <b>Liabilities</b>  |       |                     |                  |                     |                  |                                      |                 |
| Distributions payable   | 4     | -                   | -                | 2,972               | 72,428           | 736                                  | 547             |
| Due to brokers - payables for securities purchased                          |       | -                   | -                | 7,510               | -                | -                                    | -               |
| Other payables  |       | 1,566               | 968              | 1,971               | 1,750            | 94                                   | 94              |
| <b>Total liabilities (excluding net assets attributable to unitholders)</b> |       | <b>1,566</b>        | <b>968</b>       | <b>12,453</b>       | <b>74,178</b>    | <b>830</b>                           | <b>641</b>      |
| <b>Net assets attributable to unitholders - equity</b>                      | 3     | <b>3,255,492</b>    | <b>1,749,650</b> | <b>3,767,972</b>    | <b>3,195,306</b> | <b>207,895</b>                       | <b>184,966</b>  |

The above condensed interim statements of financial position should be read in conjunction with the accompanying notes.

<sup>1</sup> Rounded to the nearest whole dollar as the Fund does not meet the criteria set out in ASIC Instrument 2016/191 to round to the nearest thousand dollars.

**Booklet 5C**  
**Condensed interim statements of changes in equity**  
**For the half-year ended 31 December 2023**

| Condensed interim statements of changes in equity          | Notes | Asia Technology<br>Tigers ETF |                     | Cloud<br>Computing ETF |                     | Energy Transition<br>Metals ETF <sup>1</sup> |                     |
|--|-------|-------------------------------|---------------------|------------------------|---------------------|--|---------------------|
|  |       | 31 December<br>2023           | 31 December<br>2022 | 31 December<br>2023    | 31 December<br>2022 | 31 December<br>2023                          | 31 December<br>2022 |
|  |       | \$'000                        | \$'000              | \$'000                 | \$'000              | \$'000                                       | \$'000              |
| <b>Total equity at the beginning of the half-year</b>      | 3     | <b>468,429</b>                | 494,106             | <b>51,454</b>          | 45,802              | <b>17,339</b>                                | -                   |
| <b>Comprehensive income for the half-year</b>              |       |                               |                     |                        |                     |  |                     |
| Profit/(loss) for the half-year                            |       | <b>24,416</b>                 | (43,082)            | <b>5,428</b>           | (469)               | <b>(2,369)</b>                               | (816)               |
| Other comprehensive income                                 |       | -                             | -                   | -                      | -                   | -  | -                   |
| <b>Total comprehensive income/(loss) for the half-year</b> |       | <b>24,416</b>                 | (43,082)            | <b>5,428</b>           | (469)               | <b>(2,369)</b>                               | (816)               |
| <b>Transactions with unitholders</b>                       |       |                               |                     |                        |                     |  |                     |
| Applications   | 3     | <b>1,565</b>                  | 1,336               | -                      | 3,960               | <b>7,473</b>                                 | 11,299              |
| Redemptions  | 3     | <b>(36,717)</b>               | (8,957)             | <b>(4,769)</b>         | (2,728)             | -  | -                   |
| Units issued upon reinvestment of distributions            | 3     | <b>35</b>                     | 875                 | -                      | 289                 | <b>4</b>                                     | -                   |
| Distributions to unitholders                               | 3,4   | <b>(2,797)</b>                | (2,009)             | -                      | -                   | <b>(153)</b>                                 | -                   |
| <b>Total transactions with unitholders</b>                 |       | <b>(37,914)</b>               | (8,755)             | <b>(4,769)</b>         | 1,521               | <b>7,324</b>                                 | 11,299              |
| <b>Total equity at the end of the half-year</b>            | 3     | <b>454,931</b>                | 442,269             | <b>52,113</b>          | 46,854              | <b>22,294</b>                                | 10,483              |

The above condensed interim statements of changes in equity should be read in conjunction with the accompanying notes.

<sup>1</sup> The comparative amount for Energy Transition Metals ETF was from 26 October 2022 to 31 December 2022.

Booklet 5C  
Condensed interim statements of changes in equity  
For the half-year ended 31 December 2023  
(continued)

| Condensed interim statements of changes in equity          | Notes | Global<br>Cybersecurity ETF   |                               | Global Robotics<br>and Artificial<br>Intelligence ETF |                               | Global<br>Royalties ETF <sup>2</sup>   |  |
|--|-------|-------------------------------|-------------------------------|---|-------------------------------|--|--|
|  |       | 31 December<br>2023<br>\$'000 | 31 December<br>2022<br>\$'000 | 31 December<br>2023<br>\$'000                         | 31 December<br>2022<br>\$'000 | 31 December<br>2023<br>\$ <sup>3</sup> | 31 December<br>2022<br>\$ <sup>3</sup> |
| <b>Total equity at the beginning of the half-year</b>      | 3     | <b>733,006</b>                | 596,182                       | <b>202,352</b>  | 134,435                       | <b>3,031,792</b>                       | -                                      |
| <b>Comprehensive income for the half-year</b>              |       |                               |                               |   |                               |  |  |
| Profit/(loss) for the half-year                            |       | <b>113,189</b>                | (16,781)                      | <b>(5,567)</b>  | 4,307                         | <b>47,719</b>                          | 283,990                                |
| Other comprehensive income                                 |       | -                             | -                             | -   | -                             | -                                      | -                                      |
| <b>Total comprehensive income/(loss) for the half-year</b> |       | <b>113,189</b>                | (16,781)                      | <b>(5,567)</b>  | 4,307                         | <b>47,719</b>                          | 283,990                                |
| <b>Transactions with unitholders</b>                       |       |                               |                               |   |                               |  |  |
| Applications   | 3     | <b>4,126</b>                  | 19,260                        | <b>15,910</b>   | 2,609                         | <b>3,883,303</b>                       | 2,464,247                              |
| Redemptions  | 3     | <b>(13,839)</b>               | (1,718)                       | <b>(1,080)</b>  | -                             | <b>(856,145)</b>                       | -                                      |
| Units issued upon reinvestment of distributions            | 3     | -                             | 7,467                         | <b>8</b>  | 167                           | <b>11,793</b>                          | -                                      |
| Distributions to unitholders                               | 3,4   | -                             | -                             | -   | -                             | <b>(31,617)</b>                        | (10,204)                               |
| <b>Total transactions with unitholders</b>                 |       | <b>(9,713)</b>                | 25,009                        | <b>14,838</b>   | 2,776                         | <b>3,007,334</b>                       | 2,454,043                              |
| <b>Total equity at the end of the half-year</b>            | 3     | <b>836,482</b>                | 604,410                       | <b>211,623</b>  | 141,518                       | <b>6,086,845</b>                       | 2,738,033                              |

The above condensed interim statements of changes in equity should be read in conjunction with the accompanying notes.

<sup>2</sup> The comparative amount for Global Royalties ETF was from 9 September 2022 to 31 December 2022.

<sup>3</sup> Rounded to the nearest whole dollar as the Fund does not meet the criteria set out in ASIC Instrument 2016/191 to round to the nearest thousand dollars.

Booklet 5C  
Condensed interim statements of changes in equity  
For the half-year ended 31 December 2023  
(continued)

| Condensed interim statements of changes in equity          | Notes | Metaverse<br>ETF <sup>4</sup> |                     | NASDAQ<br>100 ETF   |                     | S&P/ASX Australian<br>Technology ETF |                     |
|--|-------|-------------------------------|---------------------|---------------------|---------------------|--------------------------------------|---------------------|
|  |       | 31 December<br>2023           | 31 December<br>2022 | 31 December<br>2023 | 31 December<br>2022 | 31 December<br>2023                  | 31 December<br>2022 |
|  |       | \$ <sup>3</sup>               | \$ <sup>3</sup>     | \$'000              | \$'000              | \$'000                               | \$'000              |
| <b>Total equity at the beginning of the half-year</b>      | 3     | <b>1,749,650</b>              | -                   | <b>3,195,306</b>    | 2,160,020           | <b>184,966</b>                       | 132,974             |
| <b>Comprehensive income for the half-year</b>              |       |                               |                     |                     |                     |                                      |                     |
| Profit/(loss) for the half-year                            |       | <b>267,972</b>                | (363,979)           | <b>279,791</b>      | (94,771)            | <b>22,031</b>                        | 7,330               |
| Other comprehensive income                                 |       | -                             | -                   | -                   | -                   | -                                    | -                   |
| <b>Total comprehensive income/(loss) for the half-year</b> |       | <b>267,972</b>                | (363,979)           | <b>279,791</b>      | (94,771)            | <b>22,031</b>                        | 7,330               |
| <b>Transactions with unitholders</b>                       |       |                               |                     |                     |                     |                                      |                     |
| Applications   | 3     | <b>1,237,870</b>              | 2,468,218           | <b>289,640</b>      | 241,382             | <b>8,945</b>                         | 12,673              |
| Redemptions  | 3     | -                             | -                   | <b>(7,253)</b>      | (16,004)            | <b>(7,357)</b>                       | (8,399)             |
| Units issued upon reinvestment of distributions            | 3     | -                             | -                   | <b>13,460</b>       | 13,046              | <b>46</b>                            | 56                  |
| Distributions to unitholders                               | 3,4   | -                             | -                   | <b>(2,972)</b>      | (2,861)             | <b>(736)</b>                         | (617)               |
| <b>Total transactions with unitholders</b>                 |       | <b>1,237,870</b>              | 2,468,218           | <b>292,875</b>      | 235,563             | <b>898</b>                           | 3,713               |
| <b>Total equity at the end of the half-year</b>            | 3     | <b>3,255,492</b>              | 2,104,239           | <b>3,767,972</b>    | 2,300,812           | <b>207,895</b>                       | 144,017             |

The above condensed interim statements of changes in equity should be read in conjunction with the accompanying notes.

<sup>3</sup> Rounded to the nearest whole dollar as the Fund does not meet the criteria set out in ASIC Instrument 2016/191 to round to the nearest thousand dollars.

<sup>4</sup> The comparative amount for Metaverse ETF was from 2 August 2022 to 31 December 2022.



**Booklet 5C**  
**Condensed interim statements of cash flows**  
**For the half-year ended 31 December 2023**

**Condensed interim statements of cash flows**

|   | <b>Asia Technology<br/>Tigers ETF</b>  |                               | <b>Cloud<br/>Computing ETF</b>         |                               | <b>Energy Transition<br/>Metals ETF<sup>1</sup></b> |                               |
|---|--|-------------------------------|--|-------------------------------|---|-------------------------------|
|   | <b>31 December<br/>2023<br/>\$'000</b> | 31 December<br>2022<br>\$'000 | <b>31 December<br/>2023<br/>\$'000</b> | 31 December<br>2022<br>\$'000 | <b>31 December<br/>2023<br/>\$'000</b>              | 31 December<br>2022<br>\$'000 |
| <b>Cash flows from operating activities</b>   |  |                               |  |                               |   |                               |
| Proceeds from sale of financial instruments at fair value through profit or loss    | 111,677                                | 51,383                        | 9,053                                  | 11,087                        | 4,554   | -                             |
| Payments for purchase of financial instruments at fair value through profit or loss | (78,400)                               | (41,903)                      | (4,222)                                | (10,377)                      | (12,081)  | (11,289)                      |
| Distributions/dividends received  | 4,541                                  | 4,132                         | 34                                     | 33                            | 229   | 7                             |
| Interest income received  | 12                                     | 9                             | 2                                      | 1                             | 1   | -                             |
| Other operating income received   | 68                                     | 22                            | 1                                      | 2                             | 4   | 10                            |
| Management fees paid  | (1,352)                                | (1,294)                       | (146)                                  | (141)                         | (71)  | (3)                           |
| Expense recoveries paid   | (237)                                  | (228)                         | (25)                                   | (25)                          | -   | -                             |
| Transaction costs paid  | (146)                                  | (110)                         | (3)                                    | (6)                           | (14)  | (8)                           |
| Other operating expenses paid   | (215)                                  | (609)                         | (6)                                    | (7)                           | (2)   | (1)                           |
| <b>Net cash inflow/(outflow) from operating activities</b>                          | <b>35,948</b>                          | <b>11,402</b>                 | <b>4,688</b>                           | <b>567</b>                    | <b>(7,380)</b>                                      | <b>(11,284)</b>               |
| <b>Cash flows from financing activities</b>   |  |                               |  |                               |   |                               |
| Proceeds from applications by unitholders   | 1,565                                  | 1,336                         | -                                      | 3,960                         | 7,473   | 11,299                        |
| Payments for redemptions by unitholders   | (39,662)                               | (8,958)                       | (4,769)                                | (2,728)                       | -   | -                             |
| Distributions paid  | (186)                                  | (4,434)                       | -                                      | (1,791)                       | (97)  | 1                             |
| <b>Net cash inflow/(outflow) from financing activities</b>                          | <b>(38,283)</b>                        | <b>(12,056)</b>               | <b>(4,769)</b>                         | <b>(559)</b>                  | <b>7,376</b>  | <b>11,300</b>                 |
| <b>Net increase/(decrease) in cash and cash equivalents</b>                         | <b>(2,335)</b>                         | <b>(654)</b>                  | <b>(81)</b>                            | <b>8</b>                      | <b>(4)</b>  | <b>16</b>                     |
| Cash and cash equivalents at the beginning of the financial half-year               | 3,046                                  | 1,148                         | 112                                    | 69                            | 27  | -                             |
| Effects of foreign currency exchange rate changes on cash and cash equivalents      | (20)                                   | (1)                           | (1)                                    | -                             | -   | -                             |
| <b>Cash and cash equivalents at the end of the financial half-year</b>              | <b>691</b>                             | <b>493</b>                    | <b>30</b>                              | <b>77</b>                     | <b>23</b>   | <b>16</b>                     |
| <b>Non-cash financing activities</b>  |  |                               |  |                               |   |                               |
| Units issued upon reinvestment of distributions                                     | 35                                     | 875                           | -                                      | 289                           | 4   | -                             |

The above condensed interim statements of cash flows should be read in conjunction with the accompanying notes.

<sup>1</sup> The comparative amount for Energy Transition Metals ETF was from 26 October 2022 to 31 December 2022.

Booklet 5C  
Condensed interim statements of cash flows  
For the half-year ended 31 December 2023  
(continued)

| Condensed interim statements of cash flows  | Global<br>Cybersecurity ETF   |                               | Global Robotics<br>and Artificial<br>Intelligence ETF |                               | Global<br>Royalties ETF <sup>2</sup>   |  |
|---|-------------------------------|-------------------------------|---|-------------------------------|--|--|
|   | 31 December<br>2023<br>\$'000 | 31 December<br>2022<br>\$'000 | 31 December<br>2023<br>\$'000                         | 31 December<br>2022<br>\$'000 | 31 December<br>2023<br>\$ <sup>3</sup> | 31 December<br>2022<br>\$ <sup>3</sup> |
| <b>Cash flows from operating activities</b>   |                               |                               |   |                               |  |  |
| Proceeds from sale of financial instruments at fair value through profit or loss    | 159,151                       | 233,897                       | 2,565   | 36,033                        | 1,396,219                              | 274,476                                |
| Payments for purchase of financial instruments at fair value through profit or loss | (149,546)                     | (208,640)                     | (18,450)  | (37,560)                      | (4,037,528)                            | (2,740,413)                            |
| Distributions/dividends received  | 3,372                         | 2,891                         | 706   | 533                           | 50,066                                 | 20,951                                 |
| Interest income received  | 9                             | 19                            | 2   | -                             | 433                                    | -                                      |
| Other operating income received   | -                             | -                             | -   | -                             | 2,027                                  | 1,171                                  |
| Management fees paid  | (2,137)                       | (1,840)                       | (463)   | (333)                         | (14,336)                               | (3,422)                                |
| Expense recoveries paid   | (375)                         | (322)                         | (98)  | (71)                          | -                                      | -                                      |
| Transaction costs paid  | (145)                         | (172)                         | (9)   | (33)                          | (2,431)                                | (997)                                  |
| Other operating expenses paid   | (57)                          | (73)                          | (312)   | (151)                         | (783)                                  | (4,985)                                |
| <b>Net cash inflow/(outflow) from operating activities</b>                          | <b>10,272</b>                 | <b>25,760</b>                 | <b>(16,059)</b>                                       | <b>(1,582)</b>                | <b>(2,606,333)</b>                     | <b>(2,453,219)</b>                     |
| <b>Cash flows from financing activities</b>   |                               |                               |   |                               |  |  |
| Proceeds from applications by unitholders   | 4,126                         | 19,260                        | 17,213  | 2,609                         | 3,586,073                              | 2,464,247                              |
| Payments for redemptions by unitholders   | (13,839)                      | (1,718)                       | (1,080)   | -                             | (856,145)                              | -                                      |
| Distributions paid  | -                             | (43,185)                      | (89)  | (1,042)                       | (114,114)                              | -                                      |
| <b>Net cash inflow/(outflow) from financing activities</b>                          | <b>(9,713)</b>                | <b>(25,643)</b>               | <b>16,044</b>   | <b>1,567</b>                  | <b>2,615,814</b>                       | <b>2,464,247</b>                       |
| <b>Net increase/(decrease) in cash and cash equivalents</b>                         | <b>559</b>                    | <b>117</b>                    | <b>(15)</b>   | <b>(15)</b>                   | <b>9,481</b>                           | <b>11,028</b>                          |
| Cash and cash equivalents at the beginning of the financial half-year               | 820                           | 1,082                         | 253   | 272                           | 8,122                                  | -                                      |
| Effects of foreign currency exchange rate changes on cash and cash equivalents      | 8                             | -                             | 23  | 12                            | (51)                                   | (46)                                   |
| <b>Cash and cash equivalents at the end of the financial half-year</b>              | <b>1,387</b>                  | <b>1,199</b>                  | <b>261</b>  | <b>269</b>                    | <b>17,552</b>                          | <b>10,982</b>                          |
| <b>Non-cash financing activities</b>  |                               |                               |   |                               |  |  |
| Units issued upon reinvestment of distributions                                     | -                             | 7,467                         | 8   | 167                           | 11,793                                 | -                                      |

The above condensed interim statements of cash flows should be read in conjunction with the accompanying notes.

<sup>2</sup> The comparative amount for Global Royalties ETF was from 9 September 2022 to 31 December 2022.

<sup>3</sup> Rounded to the nearest whole dollar as the Fund does not meet the criteria set out in ASIC Instrument 2016/191 to round to the nearest thousand dollars.

Booklet 5C  
Condensed interim statements of cash flows  
For the half-year ended 31 December 2023  
(continued)

| Condensed interim statements of cash flows  | Metaverse<br>ETF <sup>4</sup>          |  | NASDAQ<br>100 ETF             |                               | S&P/ASX Australian<br>Technology ETF |                               |
|---|--|--|-------------------------------|-------------------------------|--------------------------------------|-------------------------------|
|   | 31 December<br>2023<br>\$ <sup>3</sup> | 31 December<br>2022<br>\$ <sup>3</sup> | 31 December<br>2023<br>\$'000 | 31 December<br>2022<br>\$'000 | 31 December<br>2023<br>\$'000        | 31 December<br>2022<br>\$'000 |
| <b>Cash flows from operating activities</b>   |  |  |                               |                               |                                      |                               |
| Proceeds from sale of financial instruments at fair value through profit or loss    | 457,365                                | 777,627                                | 703,000                       | 250,249                       | 20,240                               | 17,632                        |
| Payments for purchase of financial instruments at fair value through profit or loss | (1,694,658)                            | (3,239,340)                            | (914,910)                     | (418,511)                     | (22,039)                             | (24,039)                      |
| Distributions/dividends received  | 7,006                                  | 4,973                                  | 12,184                        | 9,190                         | 1,192                                | 979                           |
| Movement in cash held on collateral   | -                                      | -                                      | 902                           | -                             | -                                    | -                             |
| Interest income received  | 24                                     | 3                                      | 132                           | 54                            | 2                                    | -                             |
| Other operating income received   | 743                                    | 1,393                                  | 65                            | 192                           | -                                    | 2                             |
| Management fees paid  | (7,895)                                | (4,525)                                | (6,447)                       | (4,558)                       | (355)                                | (279)                         |
| Expense recoveries paid   | -                                      | -                                      | (1,696)                       | (1,200)                       | (94)                                 | (74)                          |
| Transaction costs paid  | (666)                                  | (1,632)                                | (96)                          | (72)                          | (3)                                  | (2)                           |
| Other operating expenses paid   | (677)                                  | (1,258)                                | (44)                          | -                             | (10)                                 | (4)                           |
| <b>Net cash inflow/(outflow) from operating activities</b>                          | <b>(1,238,758)</b>                     | <b>(2,462,759)</b>                     | <b>(206,910)</b>              | <b>(164,656)</b>              | <b>(1,067)</b>                       | <b>(5,785)</b>                |
| <b>Cash flows from financing activities</b>   |  |  |                               |                               |                                      |                               |
| Proceeds from applications by unitholders   | 1,237,870                              | 2,468,218                              | 282,164                       | 241,382                       | 8,945                                | 12,673                        |
| Payments for redemptions by unitholders   | -                                      | -                                      | (7,253)                       | (16,004)                      | (7,357)                              | (8,399)                       |
| Distributions paid  | -                                      | -                                      | (58,968)                      | (57,236)                      | (501)                                | (411)                         |
| <b>Net cash inflow/(outflow) from financing activities</b>                          | <b>1,237,870</b>                       | <b>2,468,218</b>                       | <b>215,943</b>                | <b>168,142</b>                | <b>1,087</b>                         | <b>3,863</b>                  |
| <b>Net increase/(decrease) in cash and cash equivalents</b>                         | <b>(888)</b>                           | <b>5,459</b>                           | <b>9,033</b>                  | <b>3,486</b>                  | <b>20</b>                            | <b>(1,922)</b>                |
| Cash and cash equivalents at the beginning of the financial half-year               | 4,095                                  | -                                      | 4,487                         | 3,891                         | 56                                   | 1,981                         |
| Effects of foreign currency exchange rate changes on cash and cash equivalents      | (50)                                   | -                                      | (109)                         | (51)                          | -                                    | -                             |
| <b>Cash and cash equivalents at the end of the financial half-year</b>              | <b>3,157</b>                           | <b>5,459</b>                           | <b>13,411</b>                 | <b>7,326</b>                  | <b>76</b>                            | <b>59</b>                     |
| <b>Non-cash financing activities</b>  |  |  |                               |                               |                                      |                               |
| Units issued upon reinvestment of distributions                                     | -                                      | -                                      | 13,460                        | 13,046                        | 46                                   | 56                            |

The above condensed interim statements of cash flows should be read in conjunction with the accompanying notes.

<sup>3</sup> Rounded to the nearest whole dollar as the Fund does not meet the criteria set out in ASIC Instrument 2016/191 to round to the nearest thousand dollars.

<sup>4</sup> The comparative amount for Metaverse ETF was from 2 August 2022 to 31 December 2022.

**Contents of the notes to the condensed interim financial statements**

|   | Page |
|---|------|
| 1 General information                                   | 19   |
| 2 Summary of material accounting policies               | 19   |
| 3 Net assets attributable to unitholders                | 21   |
| 4 Distributions to unitholders                          | 24   |
| 5 Cash and cash equivalents                             | 25   |
| 6 Financial assets at fair value through profit or loss | 26   |
| 7 Fair value measurements                               | 27   |
| 8 Events occurring after the reporting period           | 32   |

## 1 General information

These condensed interim financial statements cover the following managed investment funds (the "Funds"). The Funds are registered managed investment schemes under the *Corporations Act 2001*. The Responsible Entity cannot issue or redeem any units from the 80th anniversary of the day before the day the Funds commenced if that issue or redemption would cause a contravention of the rule against perpetuities or any other rule of law or equity. The Funds may be terminated in accordance with the provisions of their Constitutions. The Funds are domiciled in Australia.

| Abbreviated Fund name                           | Registered date  | Commenced date    | Financial reporting period      |
|---|------------------|-------------------|---------------------------------|
| Asia Technology Tigers ETF                      | 22 June 2018     | 18 September 2018 | 1 July 2023 to 31 December 2023 |
| Cloud Computing ETF                             | 1 September 2020 | 22 February 2021  | 1 July 2023 to 31 December 2023 |
| Energy Transition Metals ETF                    | 1 July 2022      | 26 October 2022   | 1 July 2023 to 31 December 2023 |
| Global Cybersecurity ETF                        | 18 June 2014     | 30 August 2016    | 1 July 2023 to 31 December 2023 |
| Global Robotics and Artificial Intelligence ETF | 21 March 2018    | 12 September 2018 | 1 July 2023 to 31 December 2023 |
| Global Royalties ETF                            | 1 July 2022      | 9 September 2022  | 1 July 2023 to 31 December 2023 |
| Metaverse ETF                                   | 6 January 2022   | 2 August 2022     | 1 July 2023 to 31 December 2023 |
| NASDAQ 100 ETF                                  | 16 June 2014     | 26 May 2015       | 1 July 2023 to 31 December 2023 |
| S&P/ASX Australian Technology ETF               | 19 August 2019   | 4 March 2020      | 1 July 2023 to 31 December 2023 |

The Responsible Entity of the Funds is Betashares Capital Ltd (the "Responsible Entity"). The Responsible Entity's registered office is Level 11, 50 Margaret Street, Sydney, NSW 2000.

The condensed interim financial statements were authorised for issue by the directors of the Responsible Entity on 8 March 2024. The directors of the Responsible Entity have the power to amend and reissue the condensed interim financial statements.

## 2 Summary of material accounting policies

The principal accounting policies applied in the preparation of these condensed interim financial statements are set out below. These policies have been consistently applied to all years presented unless otherwise stated.

### (a) Basis of preparation

These general purpose condensed interim financial statements have been prepared in accordance with Australian Accounting Standards, AASB 134 *Interim Financial Reporting* and the *Corporations Act 2001*. The Funds are for-profit unit trusts for the purpose of preparing the condensed interim financial statements.

These condensed interim financial statements do not include all the notes of the type normally included in annual financial statements. The financial report of the Funds complies with International Financial Reporting Standards adopted by the International Accounting Standards Board. Accordingly, this report is to be read in conjunction with the annual report for the year ended 30 June 2023 and any continuous disclosure requirements of the *Corporations Act 2001*.

The Funds operated solely in one segment which is the business of investment management within Australia.

## **2 Summary of material accounting policies (continued)**

### **(a) Basis of preparation (continued)**

The condensed interim financial statements are prepared on the basis of fair value measurement of assets and liabilities except where otherwise stated.

The condensed interim statement of financial position are presented on a liquidity basis. Assets and liabilities are presented in decreasing order of liquidity and are not distinguished between current and non-current. All balances are expected to be recovered or settled within twelve months, except for investments in financial assets and liabilities at fair value through profit or loss and net assets attributable to unitholders.

#### *Use of estimates and judgement*

Management makes estimates and assumptions that affect the reported amounts in the condensed interim financial statements. These estimates and assumptions are continually evaluated and based on historical experience and other factors, including expectations of future events that are believed to be reasonable under the circumstances. Actual results may differ from these estimates.

For the majority of the Funds' financial instruments, quoted market prices are readily available. However, certain financial instruments are fair valued using valuation techniques. Where valuation techniques (for example, pricing models) are used to determine fair values, they are validated and regularly reviewed by experienced personnel of the Responsible Entity, independent of the area that created them.

Models use observable data, to the extent practicable. However, areas such as credit risk (both own and counterparty), volatilities and correlations require management to make estimates. Changes in assumptions about these factors could affect the reported fair value of financial instruments.

For certain other financial instruments, including amounts due from/to brokers and payables, the carrying amounts approximate fair value due to the short-term nature of these financial instruments.

#### *Functional currency and presentation*

The financial statements are presented in Australian dollars, which are the Funds' functional currency.

### **(b) Australian accounting standards and interpretations**

The Funds have applied *AASB 2021-2 Amendments to Australian Accounting Standards - Disclosure of Accounting policies and Definition of Accounting Estimates*, effective from January 2023, for the first time in the current financial period. There are no other new accounting standards, interpretations or amendments to existing standards that are effective for the half-year beginning 1 July 2023 that had material impact on the Funds.

### **(c) Rounding of amounts**

The Funds are an entity of the kind referred to in *ASIC Corporations (Rounding in Financial/Directors' Reports) Instrument 2016/191*, relating to the "rounding off" of amounts in the financial statements. Amounts in the condensed interim financial statements have been rounded off to the nearest thousand dollars, unless otherwise stated.

### 3 Net assets attributable to unitholders

Units are normally redeemable by unitholders being Authorised Participants at the unitholders' option, however, applications and redemptions may be suspended by the Responsible Entity if it is in the best interests of the unitholders. The units can be put back to the Funds at any time for cash based on the redemption price, which is equal to a proportionate share of the Funds' net asset value attributable to the unitholders.

Under AASB 132 *Financial Instruments: Presentation*, puttable financial instruments meet the definition of a financial liability to be classified as equity where certain strict criteria are met. The Funds shall classify a financial instrument as an equity instrument from the date when the instrument has all the features and meets the conditions.

Movements in the number of units and net assets attributable to unitholders during the half-year were as follows:

|   | <b>Asia Technology<br/>Tigers ETF</b>               |                     |                             |                     | <b>Cloud<br/>Computing ETF</b>      |                     |                             |                     |
|---|---|---------------------|-----------------------------|---------------------|-------------------------------------|---------------------|-----------------------------|---------------------|
|   | <b>31 December<br/>2023</b>                         | 31 December<br>2022 | <b>31 December<br/>2023</b> | 31 December<br>2022 | <b>31 December<br/>2023</b>         | 31 December<br>2022 | <b>31 December<br/>2023</b> | 31 December<br>2022 |
|   | Units '000  | Units '000          | \$'000                      | \$'000              | Units '000                          | Units '000          | \$'000                      | \$'000              |
| <b>Net assets attributable to unitholders</b>   |   |                     |                             |                     |                                     |                     |                             |                     |
| Opening balance                                 | 64,294  | 66,723              | 468,429                     | 494,106             | 4,427                               | 4,921               | 51,454                      | 45,802              |
| Applications                                    | 200   | 200                 | 1,565                       | 1,336               | -                                   | 400                 | -                           | 3,960               |
| Redemptions                                     | (4,800)   | (1,300)             | (36,717)                    | (8,957)             | (400)                               | (275)               | (4,769)                     | (2,728)             |
| Units issued upon reinvestment of distributions | 5   | 118                 | 35                          | 875                 | -                                   | 31                  | -                           | 289                 |
| Distributions to unitholders                    | -   | -                   | (2,797)                     | (2,009)             | -                                   | -                   | -                           | -                   |
| Profit/(loss) for the half-year                 | -   | -                   | 24,416                      | (43,082)            | -                                   | -                   | 5,428                       | (469)               |
| <b>Closing balance</b>                          | <b>59,699</b>                                       | 65,741              | <b>454,931</b>              | 442,269             | <b>4,027</b>                        | 5,077               | <b>52,113</b>               | 46,854              |
|   |   |                     |                             |                     |                                     |                     |                             |                     |
|   | <b>Energy Transition<br/>Metals ETF<sup>1</sup></b> |                     |                             |                     | <b>Global<br/>Cybersecurity ETF</b> |                     |                             |                     |
|   | <b>31 December<br/>2023</b>                         | 31 December<br>2022 | <b>31 December<br/>2023</b> | 31 December<br>2022 | <b>31 December<br/>2023</b>         | 31 December<br>2022 | <b>31 December<br/>2023</b> | 31 December<br>2022 |
|   | Units '000  | Units '000          | \$'000                      | \$'000              | Units '000                          | Units '000          | \$'000                      | \$'000              |
| <b>Net assets attributable to unitholders</b>   |   |                     |                             |                     |                                     |                     |                             |                     |
| Opening balance                                 | 2,100   | -                   | 17,339                      | -                   | 78,442                              | 74,410              | 733,006                     | 596,182             |
| Applications                                    | 900   | 1,350               | 7,473                       | 11,299              | 400                                 | 2,300               | 4,126                       | 19,260              |
| Redemptions                                     | -   | -                   | -                           | -                   | (1,400)                             | (200)               | (13,839)                    | (1,718)             |
| Units issued upon reinvestment of distributions | -   | -                   | 4                           | -                   | -                                   | -                   | -                           | 7,467               |
| Distributions to unitholders                    | -   | -                   | (153)                       | -                   | -                                   | 932                 | -                           | -                   |
| Profit/(loss) for the half-year                 | -   | -                   | (2,369)                     | (816)               | -                                   | -                   | 113,189                     | (16,781)            |
| <b>Closing balance</b>                          | <b>3,000</b>  | 1,350               | <b>22,294</b>               | 10,483              | <b>77,442</b>                       | 77,442              | <b>836,482</b>              | 604,410             |

<sup>1</sup> The comparative amount for Energy Transition Metals ETF was from 26 October 2022 to 31 December 2022.

**3 Net assets attributable to unitholders (continued)**

|   | Global Robotics and Artificial Intelligence ETF |                  |                  |                  | Global Royalties ETF <sup>2</sup> |                    |                  |                  |
|---|---|------------------|------------------|------------------|-----------------------------------|--------------------|------------------|------------------|
|   | 31 December 2023                                | 31 December 2022 | 31 December 2023 | 31 December 2022 | 31 December 2023                  | 31 December 2022   | 31 December 2023 | 31 December 2022 |
|   | Units '000                                      | Units '000       | \$'000           | \$'000           | Units <sup>4</sup>                | Units <sup>4</sup> | \$ <sup>4</sup>  | \$ <sup>4</sup>  |
| <b>Net assets attributable to unitholders</b>   |   |                  |                  |                  |                                   |                    |                  |                  |
| Opening balance                                 | 15,541  | 15,073           | 202,352          | 134,435          | 365,074                           | -                  | 3,031,792        | -                |
| Applications                                    | 1,300   | 300              | 15,910           | 2,609            | 450,000                           | 300,000            | 3,883,303        | 2,464,247        |
| Redemptions                                     | (100)   | -                | (1,080)          | -                | (100,000)                         | -                  | (856,145)        | -                |
| Units issued upon reinvestment of distributions | 1   | 19               | 8                | 167              | 1,420                             | -                  | 11,793           | -                |
| Distributions to unitholders                    | -   | -                | -                | -                | -                                 | -                  | (31,617)         | (10,204)         |
| Profit/(loss) for the half-year                 | -   | -                | (5,567)          | 4,307            | -                                 | -                  | 47,719           | 283,990          |
| <b>Closing balance</b>                          | <b>16,742</b>                                   | <b>15,392</b>    | <b>211,623</b>   | <b>141,518</b>   | <b>716,494</b>                    | <b>300,000</b>     | <b>6,086,845</b> | <b>2,738,033</b> |

|   | Metaverse ETF <sup>3</sup> |                    |                  |                  | NASDAQ 100 ETF   |                  |                  |                  |
|---|----------------------------|--------------------|------------------|------------------|------------------|------------------|------------------|------------------|
|   | 31 December 2023           | 31 December 2022   | 31 December 2023 | 31 December 2022 | 31 December 2023 | 31 December 2022 | 31 December 2023 | 31 December 2022 |
|   | Units <sup>4</sup>         | Units <sup>4</sup> | \$ <sup>4</sup>  | \$ <sup>4</sup>  | Units '000       | Units '000       | \$'000           | \$'000           |
| <b>Net assets attributable to unitholders</b>   |                            |                    |                  |                  |                  |                  |                  |                  |
| Opening balance                                 | 150,000                    | -                  | 1,749,650        | -                | 92,538           | 83,512           | 3,195,306        | 2,160,020        |
| Applications                                    | 100,000                    | 250,000            | 1,237,870        | 2,468,218        | 8,150            | 8,800            | 289,640          | 241,382          |
| Redemptions                                     | -                          | -                  | -                | -                | (200)            | (600)            | (7,253)          | (16,004)         |
| Units issued upon reinvestment of distributions | -                          | -                  | -                | -                | 390              | 504              | 13,460           | 13,046           |
| Distributions to unitholders                    | -                          | -                  | -                | -                | -                | -                | (2,972)          | (2,861)          |
| Profit/(loss) for the half-year                 | -                          | -                  | 267,972          | (363,979)        | -                | -                | 279,791          | (94,771)         |
| <b>Closing balance</b>                          | <b>250,000</b>             | <b>250,000</b>     | <b>3,255,492</b> | <b>2,104,239</b> | <b>100,878</b>   | <b>92,216</b>    | <b>3,767,972</b> | <b>2,300,812</b> |

<sup>2</sup> The comparative amount for Global Royalties ETF was from 9 September 2022 to 31 December 2022.

<sup>3</sup> The comparative amount for Metaverse ETF was from 2 August 2022 to 31 December 2022.

<sup>4</sup> Rounded to the nearest whole dollar as the Fund does not meet the criteria set out in ASIC Instrument 2016/191 to round to the nearest thousand dollars.



**3 Net assets attributable to unitholders (continued)**

|   | <b>S&amp;P/ASX Australian<br/>Technology ETF</b> |                     |                             |                     |
|---|--|---------------------|-----------------------------|---------------------|
|   | <b>31 December<br/>2023</b>                      | 31 December<br>2022 | <b>31 December<br/>2023</b> | 31 December<br>2022 |
|   | Units '000                                       | Units '000          | \$'000                      | \$'000              |
| <b>Net assets attributable to unitholders</b>   |  |                     |                             |                     |
| Opening balance                                 | 9,864  | 9,031               | 184,966                     | 132,974             |
| Applications                                    | 450  | 750                 | 8,945                       | 12,673              |
| Redemptions                                     | (375)  | (525)               | (7,357)                     | (8,399)             |
| Units issued upon reinvestment of distributions | 2  | 4                   | 46                          | 56                  |
| Distributions to unitholders                    | -  | -                   | (736)                       | (617)               |
| Profit/(loss) for the half-year                 | -  | -                   | 22,031                      | 7,330               |
| <b>Closing balance</b>                          | <b>9,941</b>                                     | 9,260               | <b>207,895</b>              | 144,017             |

**Capital risk management**

The Funds consider their net assets attributable to unitholders as equity. The amount of net assets attributable to unitholders can change significantly on a daily basis as the Funds are subject to daily applications and redemptions at the discretion of eligible unitholders.

Under the terms of the Funds' Constitutions, the Responsible Entity has the discretion to reject an application for units and to defer or adjust a redemption of units if the exercise of such discretion is in the best interests of unitholders.

#### 4 Distributions to unitholders

Distributions are payable as set out in the Funds' Product Disclosure Statement and/or Funds' Constitution. Such distributions are recognised as payable when they are determined by the Responsible Entity.

The distributions for the half-year were as follows:

|                                  | Asia Technology<br>Tigers ETF          |                            |  |                            | Energy Transition<br>Metals ETF <sup>1</sup> |                            |                               |                            |
|----------------------------------|--|----------------------------|--|----------------------------|--|----------------------------|-------------------------------|----------------------------|
|                                  | 31 December<br>2023<br>\$'000          | 31 December<br>2023<br>CPU | 31 December<br>2022<br>\$'000          | 31 December<br>2022<br>CPU | 31 December<br>2023<br>\$'000                | 31 December<br>2023<br>CPU | 31 December<br>2022<br>\$'000 | 31 December<br>2022<br>CPU |
| Distributions payable - December | 2,797                                  | 4.69                       | 2,009                                  | 3.06                       | 153  | 5.11                       | -                             | -                          |
| <b>Total distributions</b>       | <b>2,797</b>                           | <b>4.69</b>                | <b>2,009</b>                           | <b>3.06</b>                | <b>153</b>                                   | <b>5.11</b>                | <b>-</b>                      | <b>-</b>                   |
|                                  | Global<br>Royalties ETF <sup>2</sup>   |                            |  |                            | NASDAQ<br>100 ETF                            |                            |                               |                            |
|                                  | 31 December<br>2023<br>\$ <sup>3</sup> | 31 December<br>2023<br>CPU | 31 December<br>2022<br>\$ <sup>3</sup> | 31 December<br>2022<br>CPU | 31 December<br>2023<br>\$'000                | 31 December<br>2023<br>CPU | 31 December<br>2022<br>\$'000 | 31 December<br>2022<br>CPU |
| Distributions payable - December | 31,617                                 | 4.41                       | 10,204                                 | 3.40                       | 2,972  | 2.95                       | 2,861                         | 3.10                       |
| <b>Total distributions</b>       | <b>31,617</b>                          | <b>4.41</b>                | <b>10,204</b>                          | <b>3.40</b>                | <b>2,972</b>                                 | <b>2.95</b>                | <b>2,861</b>                  | <b>3.10</b>                |
|                                  | S&P/ASX Australian<br>Technology ETF   |                            |  |                            |  |                            |                               |                            |
|                                  | 31 December<br>2023<br>\$'000          | 31 December<br>2023<br>CPU | 31 December<br>2022<br>\$'000          | 31 December<br>2022<br>CPU |  |                            |                               |                            |
| Distributions payable - December | 736                                    | 7.40                       | 617                                    | 6.67                       |  |                            |                               |                            |
| <b>Total distributions</b>       | <b>736</b>                             | <b>7.40</b>                | <b>617</b>                             | <b>6.67</b>                |  |                            |                               |                            |

<sup>1</sup> The comparative amount for Energy Transition Metals ETF was from 26 October 2022 to 31 December 2022.

<sup>2</sup> The comparative amount for Global Royalties ETF was from 9 September 2022 to 31 December 2022.

<sup>3</sup> Rounded to the nearest whole dollar as the Fund does not meet the criteria set out in ASIC Instrument 2016/191 to round to the nearest thousand dollars.

Cloud Computing ETF, Global Cybersecurity ETF, Global Robotics and Artificial Intelligence ETF, and Metaverse ETF had nil distributions for the half-year.

The distribution information shown above refers to distributions paid by the relevant Fund for the period. Under the AMIT tax rules, a Fund may distribute cash that is different to the taxable income attributed by the Fund to unitholders.

During the half-year, some distributions were satisfied by the issue of units (reinvestment). See Note 3.

## 5 Cash and cash equivalents

Cash and cash equivalents as at the end of the financial period as shown in the condensed interim statements of cash flows and the condensed interim statements of financial position were as follows:

|      | Asia Technology<br>Tigers ETF |              | Cloud<br>Computing ETF |            | Energy Transition<br>Metals ETF |           |
|------|-------------------------------|--------------|------------------------|------------|---------------------------------|-----------|
|      | 31 December                   | 30 June      | 31 December            | 30 June    | 31 December                     | 30 June   |
|      | 2023                          | 2023         | 2023                   | 2023       | 2023                            | 2023      |
|      | \$'000                        | \$'000       | \$'000                 | \$'000     | \$'000                          | \$'000    |
| Cash | 691                           | 3,046        | 30                     | 112        | 23                              | 27        |
|      | <b>691</b>                    | <b>3,046</b> | <b>30</b>              | <b>112</b> | <b>23</b>                       | <b>27</b> |

|      | Global<br>Cybersecurity ETF |            | Global Robotics<br>and Artificial<br>Intelligence ETF |            | Global<br>Royalties ETF |                 |
|------|-----------------------------|------------|---|------------|-------------------------|-----------------|
|      | 31 December                 | 30 June    | 31 December   | 30 June    | 31 December             | 30 June         |
|      | 2023                        | 2023       | 2023  | 2023       | 2023                    | 2023            |
|      | \$'000                      | \$'000     | \$'000  | \$'000     | \$ <sup>1</sup>         | \$ <sup>1</sup> |
| Cash | 1,387                       | 820        | 261   | 253        | 17,552                  | 8,122           |
|      | <b>1,387</b>                | <b>820</b> | <b>261</b>  | <b>253</b> | <b>17,552</b>           | <b>8,122</b>    |

|      | Metaverse<br>ETF |                 | NASDAQ<br>100 ETF |              | S&P/ASX Australian<br>Technology ETF |           |
|------|------------------|-----------------|-------------------|--------------|--------------------------------------|-----------|
|      | 31 December      | 30 June         | 31 December       | 30 June      | 31 December                          | 30 June   |
|      | 2023             | 2023            | 2023              | 2023         | 2023                                 | 2023      |
|      | \$ <sup>1</sup>  | \$ <sup>1</sup> | \$'000            | \$'000       | \$'000                               | \$'000    |
| Cash | 3,157            | 4,095           | 13,411            | 4,487        | 76                                   | 56        |
|      | <b>3,157</b>     | <b>4,095</b>    | <b>13,411</b>     | <b>4,487</b> | <b>76</b>                            | <b>56</b> |

<sup>1</sup> Rounded to the nearest whole dollar as the Fund does not meet the criteria set out in ASIC Instrument 2016/191 to round to the nearest thousand dollars.

## 6 Financial assets and liabilities at fair value through profit or loss

The Funds measure and recognise the following assets and liabilities at fair value on a recurring basis:

|  | Asia Technology<br>Tigers ETF |                | Cloud<br>Computing ETF |               | Energy Transition<br>Metals ETF |               |
|--|-------------------------------|----------------|------------------------|---------------|---------------------------------|---------------|
|  | 31 December                   | 30 June        | 31 December            | 30 June       | 31 December                     | 30 June       |
|  | 2023                          | 2023           | 2023                   | 2023          | 2023                            | 2023          |
|  | \$'000                        | \$'000         | \$'000                 | \$'000        | \$'000                          | \$'000        |
| <b>Financial assets at fair value through profit or loss</b>       |                               |                |                        |               |                                 |               |
| Listed securities  | 456,186                       | 466,260        | 52,093                 | 51,370        | 22,426                          | 17,418        |
| <b>Total financial assets at fair value through profit or loss</b> | <b>456,186</b>                | <b>466,260</b> | <b>52,093</b>          | <b>51,370</b> | <b>22,426</b>                   | <b>17,418</b> |

|  | Global<br>Cybersecurity ETF |                | Global Robotics<br>and Artificial<br>Intelligence ETF |                | Global<br>Royalties ETF |                  |
|--|-----------------------------|----------------|---|----------------|-------------------------|------------------|
|  | 31 December                 | 30 June        | 31 December   | 30 June        | 31 December             | 30 June          |
|  | 2023                        | 2023           | 2023  | 2023           | 2023                    | 2023             |
|  | \$'000                      | \$'000         | \$'000  | \$'000         | \$ <sup>1</sup>         | \$ <sup>1</sup>  |
| <b>Financial assets at fair value through profit or loss</b>       |                             |                |   |                |                         |                  |
| Listed securities  | 833,842                     | 732,006        | 211,131   | 201,967        | 5,672,528               | 3,017,711        |
| <b>Total financial assets at fair value through profit or loss</b> | <b>833,842</b>              | <b>732,006</b> | <b>211,131</b>  | <b>201,967</b> | <b>5,672,528</b>        | <b>3,017,711</b> |

|  | Metaverse<br>ETF |                  | NASDAQ<br>100 ETF |                  | S&P/ASX Australian<br>Technology ETF |                |
|--|------------------|------------------|-------------------|------------------|--------------------------------------|----------------|
|  | 31 December      | 30 June          | 31 December       | 30 June          | 31 December                          | 30 June        |
|  | 2023             | 2023             | 2023              | 2023             | 2023                                 | 2023           |
|  | \$ <sup>1</sup>  | \$ <sup>1</sup>  | \$'000            | \$'000           | \$'000                               | \$'000         |
| <b>Financial assets at fair value through profit or loss</b>       |                  |                  |                   |                  |                                      |                |
| Listed securities  | 3,252,981        | 1,745,649        | 3,755,009         | 3,262,171        | 208,632                              | 185,536        |
| Listed futures   | -                | -                | 208               | 299              | -                                    | -              |
| <b>Total financial assets at fair value through profit or loss</b> | <b>3,252,981</b> | <b>1,745,649</b> | <b>3,755,217</b>  | <b>3,262,470</b> | <b>208,632</b>                       | <b>185,536</b> |

An overview of the fair value measurements relating to financial instruments at fair value through profit or loss is included in Note 6 to the financial statements.

<sup>1</sup> Rounded to the nearest whole dollar as the Fund does not meet the criteria set out in ASIC Instrument 2016/191 to round to the nearest thousand dollars.

## **7 Fair value measurements**

AASB 13 *Fair Value Measurement* requires disclosure of fair value measurements by level of the following fair value measurement hierarchy:

- Quoted prices (unadjusted) in active markets for identical assets or liabilities (Level 1);
- Inputs other than quoted prices included within level 1 that are observable for the assets or liabilities, either directly or indirectly (Level 2); and
- Inputs for the assets or liabilities that are not based on observable market data (unobservable inputs) (Level 3).

### **Fair value estimation**

The carrying amounts of the Funds' assets and liabilities at the end of each reporting period approximate their fair values.

Financial assets and liabilities at fair value through profit or loss are measured initially at fair value excluding any transaction costs that are directly attributable to the acquisition or issue of the financial assets or financial liabilities. Transaction costs on financial assets and financial liabilities at fair value through profit or loss are expensed immediately. Subsequent to initial recognition, all instruments at fair value through profit or loss are measured at fair value with changes in their fair value recognised in condensed interim statements of comprehensive income.

#### *(i) Fair value in an active market (Level 1)*

The fair value of financial assets and liabilities traded in active markets is based on their quoted market prices at the end of the reporting period without any deduction for estimated future selling costs.

The Funds value their investments in accordance with the accounting policies set out in Note 2. For the majority of their investments, the Funds rely on information provided by independent pricing services for the valuation of their investments.

The quoted market price used for financial assets and liabilities is the last traded price. Where the last traded price does not fall within the bid-ask spread, an assessment is performed by management to determine the appropriate valuation price to use that is most representative of fair value.

A financial instrument is regarded as quoted in an active market if quoted prices are readily and regularly available from an exchange, dealer, broker, industry group, pricing service, or regulatory agency, and those prices represent actual and regularly occurring market transactions on an arm's length basis.

#### *(ii) Fair value in an inactive or unquoted market (Level 2 and Level 3)*

The fair value of financial assets and liabilities that are not traded in an active market is determined using valuation techniques. These include the use of recent arm's length market transactions, reference to the current fair value of a substantially similar other instrument, discounted cash flow techniques, option pricing models or any other valuation technique that provides a reliable estimate of prices obtained in actual market transactions.

Where discounted cash flow techniques are used, estimated future cash flows are based on management's best estimates and the discount rate used is a market rate at the end of the reporting period applicable for an instrument with similar terms and conditions.

## 7 Fair value measurements (continued)

### Fair value estimation (continued)

(ii) Fair value in an inactive or unquoted market (Level 2 and Level 3) (continued)

For other pricing models, inputs are based on market data at the end of the reporting period. Fair values for unquoted equity investments are estimated, if possible, using applicable price/earnings ratios for similar listed companies adjusted to reflect the specific circumstances of the issuer.

The fair value of financial liabilities for disclosure purposes is estimated by discounting the future contractual cash flows at the current market interest rate that is available to the Funds for similar financial instruments.

Index futures are measured by the quoted market prices, or binding dealer price quotations on the exchange where they are listed or held.

(iii) Recognised fair value measurements

The tables below set out the Funds' financial assets and liabilities (by class) measured at fair value according to the fair value hierarchy:

| <b>Asia Technology Tigers ETF</b>                      |                |             |             |                |                |          |          |                |
|--|----------------|-------------|-------------|----------------|----------------|----------|----------|----------------|
|  | Level 1        | Level 2     | Level 3     | Total          | Level 1        | Level 2  | Level 3  | Total          |
|  | 31 December    | 31 December | 31 December | 31 December    | 30 June        | 30 June  | 30 June  | 30 June        |
|  | 2023           | 2023        | 2023        | 2023           | 2023           | 2023     | 2023     | 2023           |
|  | \$'000         | \$'000      | \$'000      | \$'000         | \$'000         | \$'000   | \$'000   | \$'000         |
| <b>Financial assets</b>                                |                |             |             |                |                |          |          |                |
| Financial assets at fair value through profit or loss: |                |             |             |                |                |          |          |                |
| Listed securities                                      | 456,186        | -           | -           | 456,186        | 466,260        | -        | -        | 466,260        |
| <b>Total</b>   | <b>456,186</b> | <b>-</b>    | <b>-</b>    | <b>456,186</b> | <b>466,260</b> | <b>-</b> | <b>-</b> | <b>466,260</b> |

| <b>Cloud Computing ETF</b>                             |               |             |             |               |               |          |          |               |
|--|---------------|-------------|-------------|---------------|---------------|----------|----------|---------------|
|  | Level 1       | Level 2     | Level 3     | Total         | Level 1       | Level 2  | Level 3  | Total         |
|  | 31 December   | 31 December | 31 December | 31 December   | 30 June       | 30 June  | 30 June  | 30 June       |
|  | 2023          | 2023        | 2023        | 2023          | 2023          | 2023     | 2023     | 2023          |
|  | \$'000        | \$'000      | \$'000      | \$'000        | \$'000        | \$'000   | \$'000   | \$'000        |
| <b>Financial assets</b>                                |               |             |             |               |               |          |          |               |
| Financial assets at fair value through profit or loss: |               |             |             |               |               |          |          |               |
| Listed securities                                      | 52,093        | -           | -           | 52,093        | 51,370        | -        | -        | 51,370        |
| <b>Total</b>   | <b>52,093</b> | <b>-</b>    | <b>-</b>    | <b>52,093</b> | <b>51,370</b> | <b>-</b> | <b>-</b> | <b>51,370</b> |

## 7 Fair value measurements (continued)

### Fair value estimation (continued)

(iii) Recognised fair value measurements (continued)

| Energy Transition Metals ETF                           |               |             |             |               |               |          |          |               |
|--|---------------|-------------|-------------|---------------|---------------|----------|----------|---------------|
|  | Level 1       | Level 2     | Level 3     | Total         | Level 1       | Level 2  | Level 3  | Total         |
|  | 31 December   | 31 December | 31 December | 31 December   | 30 June       | 30 June  | 30 June  | 30 June       |
|  | 2023          | 2023        | 2023        | 2023          | 2023          | 2023     | 2023     | 2023          |
|  | \$'000        | \$'000      | \$'000      | \$'000        | \$'000        | \$'000   | \$'000   | \$'000        |
| <b>Financial assets</b>                                |               |             |             |               |               |          |          |               |
| Financial assets at fair value through profit or loss: |               |             |             |               |               |          |          |               |
| Listed securities                                      | 22,426        | -           | -           | 22,426        | 17,418        | -        | -        | 17,418        |
| <b>Total</b>   | <b>22,426</b> | <b>-</b>    | <b>-</b>    | <b>22,426</b> | <b>17,418</b> | <b>-</b> | <b>-</b> | <b>17,418</b> |

| Global Cybersecurity ETF                               |                |             |             |                |                |          |          |                |
|--|----------------|-------------|-------------|----------------|----------------|----------|----------|----------------|
|  | Level 1        | Level 2     | Level 3     | Total          | Level 1        | Level 2  | Level 3  | Total          |
|  | 31 December    | 31 December | 31 December | 31 December    | 30 June        | 30 June  | 30 June  | 30 June        |
|  | 2023           | 2023        | 2023        | 2023           | 2023           | 2023     | 2023     | 2023           |
|  | \$'000         | \$'000      | \$'000      | \$'000         | \$'000         | \$'000   | \$'000   | \$'000         |
| <b>Financial assets</b>                                |                |             |             |                |                |          |          |                |
| Financial assets at fair value through profit or loss: |                |             |             |                |                |          |          |                |
| Listed securities                                      | 833,842        | -           | -           | 833,842        | 732,006        | -        | -        | 732,006        |
| <b>Total</b>   | <b>833,842</b> | <b>-</b>    | <b>-</b>    | <b>833,842</b> | <b>732,006</b> | <b>-</b> | <b>-</b> | <b>732,006</b> |

| Global Robotics and Artificial Intelligence ETF        |                |             |             |                |                |          |          |                |
|--|----------------|-------------|-------------|----------------|----------------|----------|----------|----------------|
|  | Level 1        | Level 2     | Level 3     | Total          | Level 1        | Level 2  | Level 3  | Total          |
|  | 31 December    | 31 December | 31 December | 31 December    | 30 June        | 30 June  | 30 June  | 30 June        |
|  | 2023           | 2023        | 2023        | 2023           | 2023           | 2023     | 2023     | 2023           |
|  | \$'000         | \$'000      | \$'000      | \$'000         | \$'000         | \$'000   | \$'000   | \$'000         |
| <b>Financial assets</b>                                |                |             |             |                |                |          |          |                |
| Financial assets at fair value through profit or loss: |                |             |             |                |                |          |          |                |
| Listed securities                                      | 211,131        | -           | -           | 211,131        | 201,967        | -        | -        | 201,967        |
| <b>Total</b>   | <b>211,131</b> | <b>-</b>    | <b>-</b>    | <b>211,131</b> | <b>201,967</b> | <b>-</b> | <b>-</b> | <b>201,967</b> |

## 7 Fair value measurements (continued)

### Fair value estimation (continued)

(iii) Recognised fair value measurements (continued)

|  |  | Global Royalties ETF |                 |                 |                  |                  |                 |                 |                  |
|--|--|----------------------|-----------------|-----------------|------------------|------------------|-----------------|-----------------|------------------|
|  |  | Level 1              | Level 2         | Level 3         | Total            | Level 1          | Level 2         | Level 3         | Total            |
|  |  | 31 December          | 31 December     | 31 December     | 31 December      | 30 June          | 30 June         | 30 June         | 30 June          |
|  |  | 2023                 | 2023            | 2023            | 2023             | 2023             | 2023            | 2023            | 2023             |
|  |  | \$ <sup>1</sup>      | \$ <sup>1</sup> | \$ <sup>1</sup> | \$ <sup>1</sup>  | \$ <sup>1</sup>  | \$ <sup>1</sup> | \$ <sup>1</sup> | \$ <sup>1</sup>  |
| <b>Financial assets</b>                                |  |                      |                 |                 |                  |                  |                 |                 |                  |
| Financial assets at fair value through profit or loss: |  |                      |                 |                 |                  |                  |                 |                 |                  |
| Listed securities                                      |  | 5,672,528            | -               | -               | 5,672,528        | 3,017,711        | -               | -               | 3,017,711        |
| <b>Total</b>   |  | <b>5,672,528</b>     | <b>-</b>        | <b>-</b>        | <b>5,672,528</b> | <b>3,017,711</b> | <b>-</b>        | <b>-</b>        | <b>3,017,711</b> |
|  |  | Metaverse ETF        |                 |                 |                  |                  |                 |                 |                  |
|  |  | Level 1              | Level 2         | Level 3         | Total            | Level 1          | Level 2         | Level 3         | Total            |
|  |  | 31 December          | 31 December     | 31 December     | 31 December      | 30 June          | 30 June         | 30 June         | 30 June          |
|  |  | 2023                 | 2023            | 2023            | 2023             | 2023             | 2023            | 2023            | 2023             |
|  |  | \$ <sup>1</sup>      | \$ <sup>1</sup> | \$ <sup>1</sup> | \$ <sup>1</sup>  | \$ <sup>1</sup>  | \$ <sup>1</sup> | \$ <sup>1</sup> | \$ <sup>1</sup>  |
| <b>Financial assets</b>                                |  |                      |                 |                 |                  |                  |                 |                 |                  |
| Financial assets at fair value through profit or loss: |  |                      |                 |                 |                  |                  |                 |                 |                  |
| Listed securities                                      |  | 3,252,981            | -               | -               | 3,252,981        | 1,745,649        | -               | -               | 1,745,649        |
| <b>Total</b>   |  | <b>3,252,981</b>     | <b>-</b>        | <b>-</b>        | <b>3,252,981</b> | <b>1,745,649</b> | <b>-</b>        | <b>-</b>        | <b>1,745,649</b> |
|  |  | NASDAQ 100 ETF       |                 |                 |                  |                  |                 |                 |                  |
|  |  | Level 1              | Level 2         | Level 3         | Total            | Level 1          | Level 2         | Level 3         | Total            |
|  |  | 31 December          | 31 December     | 31 December     | 31 December      | 30 June          | 30 June         | 30 June         | 30 June          |
|  |  | 2023                 | 2023            | 2023            | 2023             | 2023             | 2023            | 2023            | 2023             |
|  |  | \$'000               | \$'000          | \$'000          | \$'000           | \$'000           | \$'000          | \$'000          | \$'000           |
| <b>Financial assets</b>                                |  |                      |                 |                 |                  |                  |                 |                 |                  |
| Financial assets at fair value through profit or loss: |  |                      |                 |                 |                  |                  |                 |                 |                  |
| Listed securities                                      |  | 3,755,009            | -               | -               | 3,755,009        | 3,262,171        | -               | -               | 3,262,171        |
| Listed futures   |  | 208                  | -               | -               | 208              | 299              | -               | -               | 299              |
| <b>Total</b>   |  | <b>3,755,217</b>     | <b>-</b>        | <b>-</b>        | <b>3,755,217</b> | <b>3,262,470</b> | <b>-</b>        | <b>-</b>        | <b>3,262,470</b> |

<sup>1</sup> Rounded to the nearest whole dollar as the Fund does not meet the criteria set out in ASIC Instrument 2016/191 to round to the nearest thousand dollars.



## 7 Fair value measurements (continued)

### Fair value estimation (continued)

(iii) *Recognised fair value measurements (continued)*

|  |                   | S&P/ASX Australian Technology ETF |             |             |                |                |          |          |                |
|--|-------------------|-----------------------------------|-------------|-------------|----------------|----------------|----------|----------|----------------|
|  |                   | Level 1                           | Level 2     | Level 3     | Total          | Level 1        | Level 2  | Level 3  | Total          |
|  |                   | 31 December                       | 31 December | 31 December | 31 December    | 30 June        | 30 June  | 30 June  | 30 June        |
|  |                   | 2023                              | 2023        | 2023        | 2023           | 2023           | 2023     | 2023     | 2023           |
|  |                   | \$'000                            | \$'000      | \$'000      | \$'000         | \$'000         | \$'000   | \$'000   | \$'000         |
| <b>Financial assets</b>                                |                   |                                   |             |             |                |                |          |          |                |
| Financial assets at fair value through profit or loss: |                   |                                   |             |             |                |                |          |          |                |
|  | Listed securities | 208,632                           | -           | -           | 208,632        | 185,836        | -        | -        | 185,836        |
| <b>Total</b>   |                   | <b>208,632</b>                    | <b>-</b>    | <b>-</b>    | <b>208,632</b> | <b>185,836</b> | <b>-</b> | <b>-</b> | <b>185,836</b> |

(iv) *Transfers between levels*

There were no transfers between levels during the period ended 31 December 2023 and 30 June 2023.

(v) *Movement in level 3 instruments*

There were no investments classified as Level 3 within the Funds as at 31 December 2023 and 30 June 2023.

(vi) *Fair value of financial instruments not carried at fair value*

The carrying value of receivables and payables are assumed to approximate their fair values.

The carrying value of the net assets attributable to unitholders differs from its fair value (deemed to be the redemption price for individual units) due to differences in valuation inputs. This difference is not material in the current half-year.

## **8 Events occurring after the reporting period**

Since the end of the reporting period the net asset value of the below Funds has changed by more than 10% due to changes in the fair value of the investments held. These movements result from implementation of the investment strategy as set out in the relevant Funds' Product Disclosure Statement.

| <b>Fund</b>                                     | <b>Net asset value changed by:</b> |
|---|------------------------------------|
| Global Cybersecurity ETF                        | 12.41%                             |
| Global Robotics and Artificial Intelligence ETF | 15.65%                             |
| Metaverse ETF                                   | 13.16%                             |
| NASDAQ 100 ETF                                  | 13.67%                             |
| S&P/ASX Australian Technology ETF               | 14.71%                             |

No other significant events have occurred since the end of the reporting period which would impact on the financial position of the Funds disclosed in the condensed interim statements of financial position as at 31 December 2023 or on the results and cash flows of the Funds for the period ended on that date.

**Directors' declaration**

Betashares Capital Ltd presents the Directors' Declaration in respect of the following Funds:

Betashares Asia Technology Tigers ETF  
Betashares Cloud Computing ETF  
Betashares Energy Transition Metals ETF  
Betashares Global Cybersecurity ETF  
Betashares Global Robotics and Artificial Intelligence ETF  
Betashares Global Royalties ETF  
Betashares Metaverse ETF  
Betashares NASDAQ 100 ETF  
Betashares S&P/ASX Australian Technology ETF

In the opinion of the directors of Betashares Capital Ltd, the Responsible Entity of the Funds:

- (a) the financial statements and notes set out on pages 6 to 32 are in accordance with the *Corporations Act 2001*, including:
- (i) complying with Australian Accounting Standards, and interpretations issued by the Australian Accounting Standards Board and the *Corporations Regulations 2001*; and
  - (ii) giving a true and fair view of the Funds' financial positions as at 31 December 2023 and of their performance for the half-year ended on that date; and
- (b) there are reasonable grounds to believe that the Funds will be able to pay their debts as and when they become due and payable.

Signed in accordance with a resolution of the directors of Betashares Capital Ltd.



Alex Vynokur  
Director

Sydney  
8 March 2024



# Independent Auditor's Review Report

To the unitholders of following Schemes (the "Schemes"),

Betashares Asia Technology Tigers ETF

Betashares Cloud Computing ETF

Betashares Energy Transition Metals ETF

Betashares Global Cybersecurity ETF

Betashares Global Robotics and Artificial Intelligence ETF

Betashares Global Royalties ETF

Betashares Metaverse ETF

Betashares NASDAQ 100 ETF

Betashares S&P/ASX Australian Technology ETF

## Conclusion

We have reviewed the accompanying **Condensed Interim Financial Reports** of the Schemes.

Based on our review, which is not an audit, we have not become aware of any matter that makes us believe that the Condensed Interim Financial Reports of the Schemes do not comply with the *Corporations Act 2001*, including:

- giving a true and fair view of the Schemes financial position as at 31 December 2023 and of their performance for the half-year ended on that date; and
- complying with *Australian Accounting Standard AASB 134 Interim Financial Reporting* and the *Corporations Regulations 2001*.

The **Condensed Interim Financial Reports** comprise:

- Condensed interim statement of financial position as at 31 December 2023;
- Condensed interim statement of comprehensive income, Condensed interim statement of changes in equity and Condensed interim statement of cash flows for the half-year ended on that date;
- Notes 1 to 8 including selected explanatory notes; and
- The Directors' Declaration.

The **Interim Period** is the 6 months ended on 31 December 2023.

## Basis for Conclusion

We conducted our review in accordance with ASRE 2410 *Review of a Financial Report Performed by the Independent Auditor of the Entity*. Our responsibilities are further described in the *Auditor's Responsibilities for the Review of the Financial Report* section of our report.

We are independent of the Schemes in accordance with the auditor independence requirements of the *Corporations Act 2001* and the ethical requirements of the *Accounting Professional and Ethical Standards Board's APES 110 Code of Ethics for Professional Accountants (including Independence Standards)* (the Code) that are relevant to our audit of the annual financial report in Australia. We have also fulfilled our other ethical responsibilities in accordance with these requirements.

## Responsibilities of the Directors for the Condensed Interim Financial Reports

The Directors of Betashares Capital Limited (the Responsible Entity) are responsible for:

- the preparation of the Condensed Interim Financial Reports that give a true and fair view in accordance with *Australian Accounting Standards* and the *Corporations Act 2001*; and
- such internal control as the Directors determine is necessary to enable the preparation of the Condensed Interim Financial Reports that give a true and fair view and are free from material misstatement, whether due to fraud or error.

## Auditor's Responsibilities for the Review of the Condensed Interim Financial Reports

Our responsibility is to express a conclusion on the Condensed Interim Financial Reports based on our review. ASRE 2410 requires us to conclude whether we have become aware of any matter that makes us believe that the Condensed Interim Financial Reports do not comply with the *Corporations Act 2001* including giving a true and fair view of the Schemes' financial position as at 31 December 2023 and its performance for the half-year ended on that date, and complying with *Australian Accounting Standard AASB 134 Interim Financial Reporting* and the *Corporations Regulations 2001*.

A review of a Condensed Interim Period Financial Reports consist of making enquiries, primarily of persons responsible for financial and accounting matters, and applying analytical and other review procedures. A review is substantially less in scope than an audit conducted in accordance with *Australian Auditing Standards* and consequently does not enable us to obtain assurance that we would become aware of all significant matters that might be identified in an audit. Accordingly, we do not express an audit opinion.

The KPMG logo consists of the letters 'KPMG' in a stylized, bold, sans-serif font. The 'K' and 'P' are connected, and the 'M' and 'G' are also connected. The letters are white and set against a dark blue background.A handwritten signature in black ink, appearing to read 'Nic Buchanan'.

Nic Buchanan  
Partner  
Sydney  
8 March 2024



Betashares Capital Ltd (ABN 78 139 566 868 AFSL 341181) is the issuer. Investors should read the relevant fund PDS and TMD (available at [www.betashares.com.au](http://www.betashares.com.au)) and consider whether the fund is appropriate for them. Past performance is not indicative of future returns. Investing involves risk.