

BGF China Bond Fd.I2 EUR H / LU2112292094 / A2PZKY / BlackRock (LU)

Last 01/09/2025 ¹	Country	Branch	Type of yield	Type
10.21 EUR	China	Bonds: Mixed	reinvestment	Fixed-Income Fund



Risk key figures

SRRRI	1	2	3	4	5	6	7
Mountain-View Funds Rating	EDA ²						69

Yearly Performance

2024	+7.81%
2023	+2.71%
2022	-6.49%
2021	-5.01%

Master data		Conditions		Other figures	
Fund type	Single fund	Issue surcharge	0.00%	Minimum investment	USD 10,000,000.00
Category	Bonds	Planned administr. fee	0.00%	Savings plan	-
Sub category	Bonds: Mixed	Deposit fees	0.45%	UCITS / OGAW	Yes
Fund domicile	Luxembourg	Redemption charge	0.00%	Performance fee	0.00%
Tranch volume	-	Ongoing charges	-	Redeployment fee	0.00%
Total volume	(01/09/2025) CNH 17,140.65 mill.	Dividends		Investment company	
Launch date	2/19/2020	BlackRock (LU)			
KESr report funds	Yes	35a Avenue JF Kennedy, 1855, Luxembourg			
Business year start	01.09.	Luxembourg			
Sustainability type	-	https://www.blackrock.com			
Fund manager	Yii Hui Wong, Suanjin Tan, Yingbo Xu				

Performance	1M	6M	YTD	1Y	2Y	3Y	5Y	Since start
Performance	+0.39%	+3.76%	-	+7.70%	+9.90%	+4.08%	-	+2.10%
Performance p.a.	-	-	-	+7.68%	+4.83%	+1.34%	-	+0.43%
Sharpe ratio	1.28	3.23	-	3.62	1.42	-0.72	-	-0.65
Volatility	1.52%	1.49%	1.57%	1.36%	1.44%	2.00%	0.00%	3.61%
Worst month	-	0.00%	0.00%	0.00%	-0.64%	-2.27%	-2.54%	-2.54%
Best month	-	1.20%	0.49%	1.20%	1.41%	1.41%	1.51%	1.51%
Maximum loss	-0.20%	-0.30%	-0.20%	-0.30%	-1.49%	-8.56%	0.00%	-
Outperformance	-	-	0.00%	-	-	-	-	-

Distribution permission

Austria, Germany, Switzerland, Czech Republic

¹ Important note on update status: The displayed date refers exclusively to the calculation of the NAV.

BGF China Bond Fd.I2 EUR H / LU2112292094 / A2PZKY / BlackRock (LU)

2 Displays the Ethical-Dynamical Ratio calculated according to standard criteria. The maximum value is 100. For more information visit <http://www.mountain-view.com/FER-Fonds-Rating.pdf>

BGF China Bond Fd.I2 EUR H / LU2112292094 / A2PZKY / BlackRock (LU)

Investment strategy

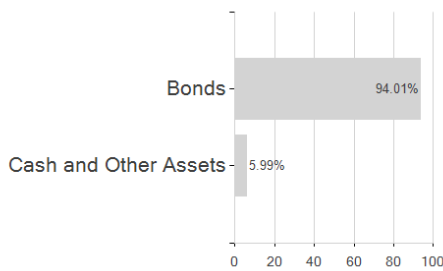
The investment adviser (IA) may use financial derivative instruments (FDIs) (i.e. investments the prices of which are based on one or more underlying assets) for investment purposes in order to achieve the investment objective of the Fund, and/or to reduce risk within the Fund's portfolio, reduce investment costs and generate additional income. The Fund may, via FDIs, generate varying amounts of market leverage (i.e. where the Fund gains market exposure in excess of the value of its assets). The Fund is actively managed, and the IA has discretion to select the Fund's investments and is not constrained by any benchmark in this process. The 1 Year China Household Savings Deposit Rate should be used by investors to compare the performance of the Fund. The performance of the 1 Year China Household Savings Deposit Rate is only available in Chinese Yuan (CNY) currency, the past performance overleaf is therefore based on CNY rather than the share class currency

Investment goal

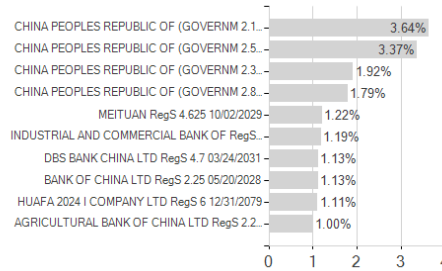
The Fund aims to maximise the return on your investment through a combination of capital growth and income on the Fund's assets. The Fund invests globally at least 70% of its total assets in fixed income (FI) securities issued or distributed either inside or outside of the People's Republic of China (PRC) and denominated in Renminbi or other non Chinese domestic currencies. These include bonds and money market instruments (i.e. debt securities with short term maturities) which may be issued by governments, government agencies, companies and supranationals (e.g. the Asian Development Bank). The Fund may invest in the full range of fixed income securities which may include investments with a relatively low credit rating or which are unrated.

Assessment Structure

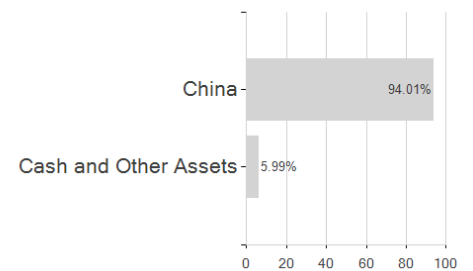
Assets



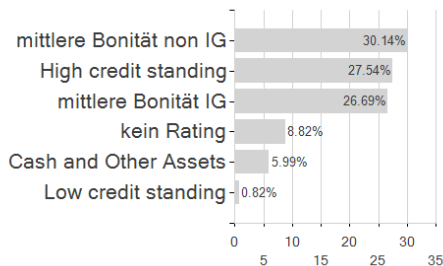
Largest positions



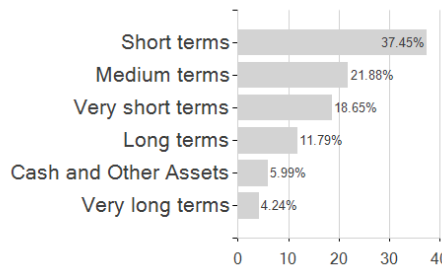
Countries



Rating



Duration



Branches

