

New Capital Wealthy Nations Bd.I CHF / IE00B3LNJP62 / A1C6UZ / Waystone M.Co.(IE)

Last 01/22/2025 ¹	Region	Branch	Type of yield	Type
65.46 CHF	Worldwide	Bonds: Mixed	paying dividend	Fixed-Income Fund



Risk key figures

SRR1	1	2	3	4	5	6	7
Mountain-View Funds Rating	EDA ²						
	▲ ▲ ▲ ▲ ▲ ▲ ▲						

Yearly Performance

2024	-1.76%
2023	+1.21%
2022	-22.83%
2021	-2.23%
2020	+4.71%

Master data		Conditions		Other figures	
-------------	--	------------	--	---------------	--

Fund type	Single fund	Issue surcharge	0.00%	Minimum investment	CHF 1,000,000.00
Category	Bonds	Planned administr. fee	0.00%	Savings plan	-
Sub category	Bonds: Mixed	Deposit fees	0.02%	UCITS / OGAW	Yes
Fund domicile	Ireland	Redemption charge	0.00%	Performance fee	0.00%
Tranch volume	(01/22/2025) USD 7.51 mill.	Ongoing charges	-	Redeployment fee	0.00%
Total volume	-	Dividends		Investment company	
Launch date	7/26/2010	02.01.2025	1.81 CHF	Waystone M.Co.(IE)	
KESt report funds	No	01.07.2024	1.79 CHF	35 Shelbourne Road, D04 A4E0, Dublin	
Business year start	01.07.	02.01.2024	1.72 CHF	Ireland	
Sustainability type	-	03.07.2023	1.83 CHF	https://www.waystone.com/	
Fund manager	Michael Leithead, Camila Astaburuaga	03.01.2023	1.75 CHF		

Performance	1M	6M	YTD	1Y	2Y	3Y	5Y	Since start
Performance	-0.02%	-1.07%	-0.05%	-0.07%	-3.80%	-20.98%	-21.97%	-21.46%
Performance p.a.	-	-	-	-0.07%	-1.92%	-7.55%	-4.83%	-4.64%
Sharpe ratio	-0.84	-1.28	-0.89	-0.67	-0.99	-1.75	-1.29	-1.26
Volatility	3.49%	3.74%	3.95%	4.09%	4.65%	5.84%	5.83%	5.79%
Worst month	-	-2.34%	-1.98%	-2.88%	-3.22%	-7.61%	-8.47%	-8.47%
Best month	-	1.56%	-0.05%	1.80%	5.21%	8.15%	8.15%	8.15%
Maximum loss	-1.27%	-5.46%	-1.24%	-5.46%	-12.68%	-28.15%	-31.83%	-
Outperformance	-	-	-1.60%	-1.91%	-	-	-	-

Distribution permission

Austria, Germany, Switzerland, Czech Republic

¹ Important note on update status: The displayed date refers exclusively to the calculation of the NAV.

² Displays the Ethical-Dynamical Ratio calculated according to standard criteria. The maximum value is 100. For more information visit <http://www.mountain-view.com/FER-Fonds-Rating.pdf>

New Capital Wealthy Nations Bd.I CHF / IE00B3LNJP62 / A1C6UZ / Waystone M.Co.(IE)

Investment strategy

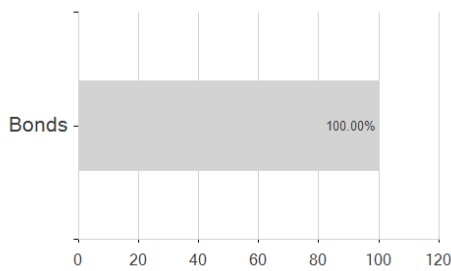
The Fund will invest in medium- to long-term international debt securities, predominantly issued by issuers located in wealthy nations, in various currencies primarily listed on Recognised Markets in major financial markets. The Fund will invest in a broadly diversified range of debt securities such as notes, bills, bonds, commercial paper, certificates of deposit and floating rate notes issued by governments, institutions and corporations in both developed and developing markets. The Fund utilises macro-economic research to assist asset allocation combined with a Net Foreign Assets measure to specify an investable universe. Fixed income assets are also selected by a quantitative screen which identifies the best value investment opportunities based on credit quality and maturity. The Fund will usually hold debt securities with investment grade ratings (Baa3 or above by Moody's or BBB- or above by Standard and Poor's or equivalent credit ratings as determined by the Investment Manager).

Investment goal

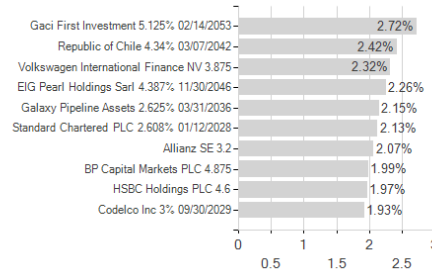
The Fund's objective is to seek long-term appreciation, through a combination of capital growth and income.

Assessment Structure

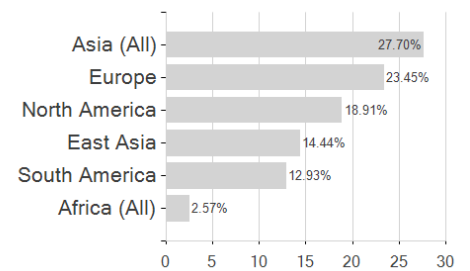
Assets



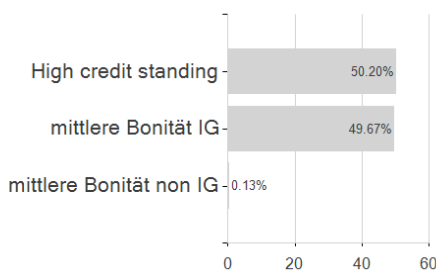
Largest positions



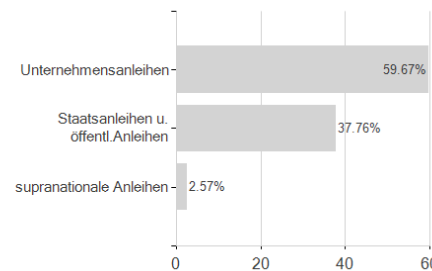
Countries



Rating



Issuer



Duration

