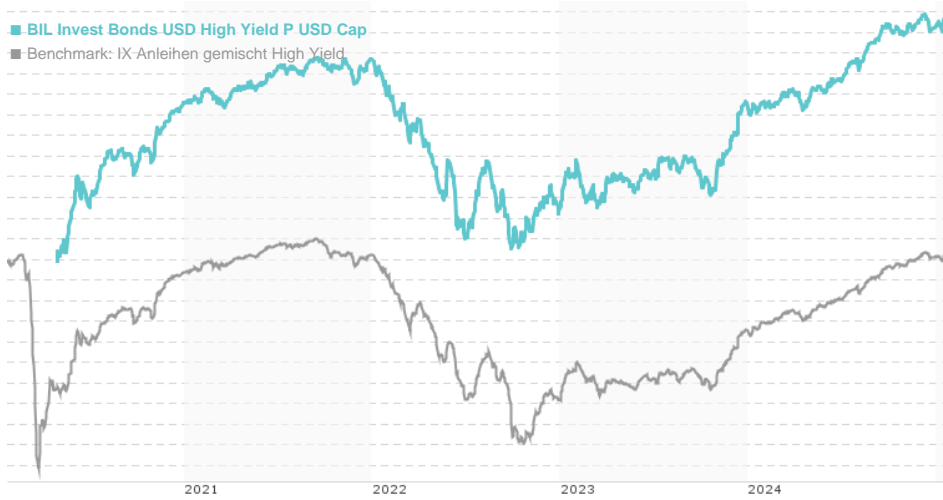


**BIL Invest Bonds USD High Yield P USD Cap / LU1689732920 / A2JEKX / BIL Manage Invest**

Last 01/17/2025 <sup>1</sup>	Region	Branch	Type of yield	Type
180.85 USD	Worldwide	Bonds: Mixed	reinvestment	Fixed-Income Fund



**Risk key figures**

SRRRI	1	2	3	4	5	6	7
Mountain-View Funds Rating	EDA <sup>2</sup>						
	▲▲▲▲▲▲▲						

**Yearly Performance**

2024	+6.30%
2023	+10.16%
2022	-12.38%
2021	+3.61%
2020	+3.57%

Master data		Conditions		Other figures	
Fund type	Single fund	Issue surcharge	3.50%	Minimum investment	UNT 0
Category	Bonds	Planned administr. fee	0.00%	Savings plan	-
Sub category	Bonds: Mixed	Deposit fees	0.00%	UCITS / OGAW	Yes
Fund domicile	Luxembourg	Redemption charge	0.00%	Performance fee	0.00%
Tranch volume	(01/17/2025) USD 1.09 mill.	Ongoing charges	-	Redeployment fee	0.00%
Total volume	(01/17/2025) USD 10.32 mill.	<b>Dividends</b>		<b>Investment company</b>	
Launch date	2/2/2018	BIL Manage Invest			
KESt report funds	No	42 Rue de la vallée, 2661, Luxembourg			
Business year start	01.01.	Luxembourg			
Sustainability type	-	www.bilmanageinvest.lu/			
Fund manager	Banque Internationale à Luxembourg				

Performance	1M	6M	YTD	1Y	2Y	3Y	5Y	Since start
Performance	+0.26%	+3.63%	+0.71%	+7.96%	+13.81%	+4.59%	-	+21.23%
Performance p.a.	-	-	-	+7.93%	+6.67%	+1.51%	-	+2.85%
Sharpe ratio	0.10	1.78	4.16	1.87	0.99	-0.22	-	0.03
Volatility	3.41%	2.60%	3.28%	2.80%	4.01%	5.45%	6.72%	5.92%
Worst month	-	-0.85%	-0.58%	-1.00%	-1.58%	-6.86%	-9.97%	-9.97%
Best month	-	1.58%	0.71%	1.58%	4.29%	5.78%	5.78%	5.78%
Maximum loss	-0.76%	-1.28%	-0.75%	-1.84%	-4.15%	-14.40%	-15.55%	-
Outperformance	-	-	0.23%	-0.03%	+4.47%	-	-	-

**Distribution permission**

Germany, Czech Republic

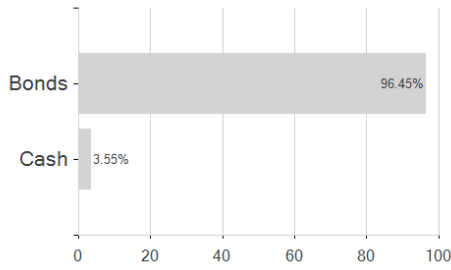
<sup>1</sup> Important note on update status: The displayed date refers exclusively to the calculation of the NAV.

<sup>2</sup> Displays the Ethical-Dynamical Ratio calculated according to standard criteria. The maximum value is 100. For more information visit <http://www.mountain-view.com/FER-Fonds-Rating.pdf>

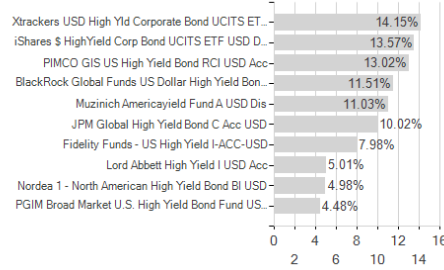
**BIL Invest Bonds USD High Yield P USD Cap / LU1689732920 / A2JEKX / BIL Manage Invest**

**Assessment Structure**

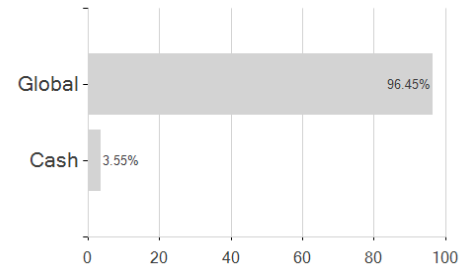
**Assets**



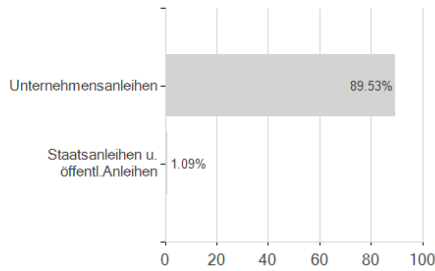
**Largest positions**



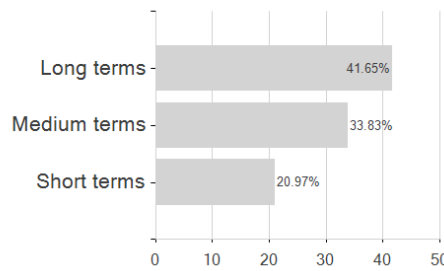
**Countries**



**Issuer**



**Duration**



**Currencies**

